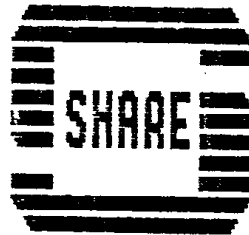


SHARE PROGRAM LIBRARY AGENCY



PROGRAM NUMBER

370D-15.0.002

University of Miami

1365 MEMORIAL DRIVE - CORAL GABLES, FLORIDA
(305) - 284-6257

VMFPLC2

Author: Michelle Lewis

Description- The tape submitted is in the operating form of VM. This tape contains Trace and Replay and various IUE and REXX utilities which are described on their individual submittals.

Trace and Replay is a tool that records and replays a sequence of events called a scenario. During the interactive session scope attentions are captured, recorded, and stored in an external file. The recorded scenarios can then be called from storage and replayed on the scope. The Trace and Replay program can be used on CADAM's Version 3 Release 1 and Version 3 Release 2.

FILE: TAPE CONTENTS A C A D A M I N C CMS TIMESHARING SYSTEM

LARGE REEL

THIS TAPE IS IN VMFPLC2 FORMAT 1600 BPI
AND CONTAINS SEVEN FILES.

TO UNLOAD THE FIRST FILE, TYPE
VMFPLC2 LOAD **

* FILE ONE - CONTENTS (GRUPNOTE)

vmfplc2 scan **

SCANNING....

BLDCYC	DATA	X1
BLDCYC	FORTRAN	X1
CIRDIR	COPY	X1
CIR2D	COPY	X1
CIR3D	COPY	X1
CLCADM	COPY	X1
CLCADM	LINK1	X1
CLCADM	LINK2	X1
CLCADMPP	COPY	X1
CLMACLIB	COPY	X1
COMM	COPY	X1
COMPCL	EXEC	X1
COMPCLEX	COPY	X1
CONVERT	EXEC	X1
DCLDCV	COPY	X1
FORTRAN	COPY	X1
IUEEND	COPY	X1
IUEPRM	COPY	X1
IUERPT	FORTRAN	X1
IUESTR	COPY	X1
LOADCUE	COPY	X1
LOADDRAW	COPY	X1
MOTION	COPY	X1
MULTAX	COPY	X1
NC	DRAW	X1
NC2DPT	COPY	X1
NC3DPT	COPY	X1
NUPASS	COPY	X1
PARTSU	COPY	X1
POSTCM	COPY	X1
PTVECTOR	FORTRAN	X1
RQMS	COPY	X1
SCOPES	COPY	X1
SPLN2D	COPY	X1
SPLN3D	COPY	X1
SURFAC	COPY	X1
SURFMEAS	FORTRAN	X1
TOOLAX	COPY	X1
USAGE	COPY	X1
USECYCLE	FORTRAN	X1
USECYCLE	NURESTOR	X1
XQAPT	COPY	X1
21IMAGE	EXEC	X1

END-OF-FILE OR END-OF-TAPE

FILE: TAPE CONTENTS A C A D A M I N C CMS TIMESHARING SYSTEM

F I L E T W O (CADRESTV - PART ONE)
TO UNLOAD THE SECOND FILE ONLY,

ENTER:

TAPE REW

TAPE FSF 1

VMFPLC2 LOAD * *

* * * * *

* FILE TWO CONTENTS:

vmfplc2 scan * *

SCANNING....

CHKDRWID EXEC X1

DRAWMOVE EXEC X1

DRAWMOVE XEDIT X2

DRWARCH EXEC X1

DRWBUILD EXEC X1

DRWOREV EXEC X1

GETDRAW EXEC X1

IUEGEN EXEC X1

IUEKDC2 ASSEMBLE X1

IUEKDC2 AUXSP X1

IUEKDC2 CPCPARMS X1

IUEKDC2 EXEC X1

IUEKDC2 LINK X1

IUEKDC2 LOGFILE X1

IUEKDC2 PRIVTABL X1

RXIUE ASSEMBLE X1

RXIUE AUXSP X1

RXIUE DOC X1

RXIUE DOCTALK X1

RXIUE IUECON01 X1

RXIUE IUELPSW X1

RXIUEGEN EXEC X1

END-OF-FILE OR END-OF-TAPE

* * * * *

F I L E T H R E E (CADRESTV - PART TWO)
TO UNLOAD THE THIRD FILE ONLY,

ENTER:

TAPE REW

TAPE FSF 2

VMFPLC2 LOAD * *

* * * * *

* FILE THREE CONTENTS:

vmfplc2 scan * *

SCANNING....

CADRESTV EXEC X1

CADUNA EXEC X1

END-OF-FILE OR END-OF-TAPE

* * * * *

F I L E F O U R (FDWG AND IUEUTIL)
TO UNLOAD THE FOURTH FILE ONLY,

ENTER:

TAPE REW

TAPE FSF 3

VMFPLC2 LOAD * *

* * * * *

* FILE FOUR CONTENTS:

vmfplc2 scan * *

SCANNING....

IUEUTIL	USAGE	X1
IUEUTIL	LINK	X1
IUEUTIL	EXEC	X1
IUEUTIL	FORTRAN	X1
JDATE	FORTRAN	X1
FDWG	FORTRAN	X1
FDWG	USAGE	X1
FDWG	EXEC	X1
FDWG	XEDIT	X2

END-OF-FILE OR END-OF-TAPE

* * * * *

F I L E F I V E (GRUPNOTE AND BEAR)

TO UNLOAD THE FIFTH FILE ONLY,

ENTER:

TAPE REW

TAPE FSF 4

VMFPLC2 LOAD * *

* * * * *

* FILE FIVE CONTENTS:

vmfplc2 scan * *

SCANNING....

GRUPNOTE	FORTRAN	X1
BEAR	FORTRAN	X1

END-OF-FILE OR END-OF-TAPE

* * * * *

F I L E S I X (CADAM TRACE/REPLAY V3R1M0)

TO UNLOAD THE SIXTH FILE ONLY,

ENTER:

TAPE REW

TAPE FSF 5

VMFPLC2 LOAD * *

* * * * *

* FILE SIX CONTENTS:

vmfplc2 scan * *

SCANNING....

README	TEXT	X1
CADTRACE	EXEC	X1
SAMPLE	TRACELIB	X1
TRACE	DRAWINGS	X1
TRACE	MACLIB	X4
TRACE	SPTPARMS	X1
TRACEIM	LOADLIB	X1
TRACELM	LOADLIB	X1

END-OF-FILE OR END-OF-TAPE

* * * * *

F I L E S E V E N (TRACE/REPLAY V3R2M0)

TO UNLOAD THE SEVENTH FILE ONLY,

ENTER:

TAPE REW

TAPE FSF 6

VMFPLC2 LOAD * *

FILE: TAPE CONTENTS A C A D A M I N C CMS TIMESHARING SYSTEM

* * * * *

FILE SEVEN CONTENTS

vmfplc2 scan * *

SCANNING....

README TEXT X1

CADTRACE EXEC X1

SAMPLE TRACELIB X1

TRACE DRAWINGS X1

TRACE MACLIB X4

TRACE SPTPARMS X1

TRACEIM LOADLIB X1

TRACELM LOADLIB X1

VM1060 CONTENTS X1

END-OF-FILE OR END-OF-TAPE

SHARE PROGRAM LIBRARY SUBMITTAL FORM

University of Miami
SHARE Program Library Agency
P. O. Box 248011
Coral Gables, Florida 33124-4220
Attn: Fred Robinson

SPLA CONTROL NUMBER: _____

This form should be completed and submitted with the program package to the SHARE Program Library Agency at the address shown above. Standards and instructions for submitting programs are in the SHARE Program Library Agency User's Guide and Catalog of Programs, or may be obtained from the SPLA.

- (1) Program Number (if new program, will be filled in by SPLA) _____
- (2) Title of Program GRUPNOTE (Change-a-Group-
of - Notes)
- (3) System Type(s) (Machine) _____
- (4) Search Keys _____
- (5) Programming Systems/Languages VS FORTRAN 2, IUE
- (6) Primary Subject Codes _____
- (7) Minimum System Requirements _____
- (8) New (N) or Revision (R) N
- (9) Date of Submittal _____
- (10) Documentation (number of pages of hardcopy submitted) 9
- (11) Author's Name and Address Johnny O. Martin, Jr.
South Carolina Electric & Gas Co.
1426 Main Street (MC 147)
Columbia, SC 29201
- (12) Name and Address of Contact for Technical ..
Inquiries (if different from Author) ..

- (13) Submitter's Installation Membership Code _____
- (14) Abstract (use reverse side of this form)

DISCLAIMER

Users should note that The University of Miami serves solely as the distribution agent for contributed programs and does not test or maintain them. They are distributed essentially in the original form submitted by the author. Neither the University of Miami nor SHARE Inc. makes any warranty, expressed or implied, as to the documentation, function, performance of the contributed programs.

GRUPNOTE PROGRAM

(ABSTRACT)

The GRUPNOTE Program is an interactive, IUE program. It is intended to supplement CADAM's GROUP FK and NOTE FK by allowing a scope operator to change note parameters for a "group" of existing notes in a CADAM drawing. Currently, interactive CADAM requires you to select each note individually in order to modify a note parameter.

The GRUPNOTE program uses three (3) methods to group notes:

- 1) Use CADAM's **GROUP FK** to group geometry prior to running the program. The program will automatically detect the grouped geometry and highlight the notes contained in the group.
- 2) Use the GRUPNOTE Program's "**TRAP MODE**" (similar to CADAM's /GROUP/TRAP/ function).
- 3) Use the GRUPNOTE Program's "**GROUP MODE**" to group notes by size, line weight or angle (ex. group all notes with a note size of 0.1).

After notes have been grouped, the GRUPNOTE program will allow you change the following note parameters:

- 1) Size
- 2) Character Line Width
- 3) Angle
- 4) Character Height
- 5) Character Width
- 6) Vertical Spacing
- 7) Horizontal Spacing

Also, you may delete the grouped notes, if desired.

Acknowledgment of Assistance

To the best of my knowledge, my program entitled "GRUPNOTE" is free of any proprietary, secret, or confidential information belonging to any person or organization. Where I have used the work, plans, procedures, systems, programs or names of companies or individuals, I have obtained their permission to do so.

Johnny O. Martin, Jr.

Johnny O. Martin, Jr.
(Program Author)

Nov 18, 1991

Date



South Carolina Electric & Gas Company
Columbia, SC 29201
(803) 748-3000

November 26, 1991

Lynne Fetsko
NASA Lewis Research Center
21000 Brookpark Road
Mail Stop 86-13
Cleveland OH, 44135

Enclosed are the source code and documentation for two programs, GRUPNOTE and BEAR.

If you need anymore information about these programs or have any questions, please let me know.

Sincerely,

Johnny O. Martin, Jr.
SC Electric & Gas Co.
1426 Main Street
Mail Code 147
Columbia, SC 29201
(803) 748-3751

(Technical Notes)

The GRUPNOTE 'changes' notes by performing the following steps:

- o Determines the notes to be grouped.
- o For each note in the group, do the following:
 - a) Uses the note's model pointer to Get (U1GET) all of the parameters associated with the note and stores the parameters in an array.
 - b) Delete (U1DEL) the old note.
 - c) Update only the parameters in the array which the user requested to be changed (ex. note height).
 - d) Add (U1ADD) the new note into the dwg.

NOTES:

1. When you leave the IUE program and continue working in interactive CADAM, you may find that some of your interactive CADAM session parameters have changed (ie. Default Color Mode and/or Character Line Weight). These can be set back to the desired values by performing the following steps:

FK TYPE /COLOR/MODE/, Y/N

(to turn color mode off)

OF

FK TYPE /COLOR/MODE/, key color no

(to change
color mode)

and

FK NOTE /PARMS/LN-WT/, key char line width

(to change
default ln-wt)

This situation occurs because some of the parameters set within the IARRAY for UIADD remain active when you exit your IUE program and return to interactive base CADAM. An APAR (Customer Trouble Report # G6856) has been submitted to correct the problem.

GRUPNOTE Program - Technical Notes (Continued)

2. Because the program uses arrays to store and manipulate the element pointer information and because arrays sizes must be determined prior to compiling the program, there is a limit to the number of notes that can exist in a dwg in which the GRUPNOTE program can work with. This limit is set at 1500 notes.

If desired, this limit can be increased. To do this, several arrays must be dimensioned and several conditional statements must be modified. The easiest way to do this is to use your editor to change all occurrences of the string '1500' to the 'desired limit'.

Also, array 'IERRAR' must be dimensioned to twice the note limit (it is currently dimensioned as '3000'). It must be changed to twice the size of the 'desired limit' (if you set the new note limit to 2000, IERRAR must be dimensioned as 4000).

All of these changes must be performed in the main program as well as all subroutines.

GRUPNOTE Program

(Change-a-Group-of-Notes)

Version 1.00

November 20, 1991

**Program Developed
by
South Carolina Electric & Gas Company**

Table of Contents

	<u>Page</u>
Disclaimer	
Abstract	3
User Instructions	4
Technical Notes	5
	8

**DISCLAIMER OF WARRANTY
LIMITATION OF LIABILITY**

SOUTH CAROLINA ELECTRIC & GAS COMPANY (SCE&G) DISCLAIMS ALL WARRANTIES EXPRESSED OR IMPLIED, INCLUDING, BUT NOT LIMITED TO ANY IMPLIED WARRANTY OF MERCHANTABILITY OR FITNESS FOR A PARTICULAR PURPOSE AS TO THE DOCUMENTATION, FUNCTION, OR PERFORMANCE OF THIS PROGRAM. THIS SOFTWARE PROGRAM IS PROVIDED "AS IS". THE ENTIRE RISK AS TO THE RESULTS AND PERFORMANCE OF THE PROGRAM IS ASSUMED BY YOU. SCE&G DOES NOT WARRANT, GUARANTEE, OR MAKE ANY REPRESENTATIONS REGARDING THE USE OF, OR THE RESULTS OBTAINED WITH THE PROGRAM IN TERMS OF CORRECTNESS AND RELIABILITY OR LEGALITY. IN NO EVENT SHALL SCE&G BE LIABLE FOR ANY LOSS OF PROFIT OR ANY OTHER COMMERCIAL DAMAGE INCLUDING BUT NOT LIMITED TO SPECIAL, INCIDENTAL, CONSEQUENTIAL OR OTHER DAMAGES.

UNDER ANY CIRCUMSTANCE AND WITHOUT ALTERATION OF THE EFFECT OF THE ABOVE PARAGRAPH, SCE&G'S LIABILITY FOR DAMAGES, FOR ANY CAUSE WHATSOEVER AND REGARDLESS OF FORM OF ACTION, SHALL NOT EXCEED THE FEES ACTUALLY PAID FOR THE SOFTWARE.

GRUPNOTE PROGRAM

(ABSTRACT)

The GRUPNOTE Program is an interactive, IUE program. It is intended to supplement CADAM's GROUP FK and NOTE FK by allowing a scope operator to change note parameters for a "group" of existing notes in a CADAM drawing. Currently, interactive CADAM requires you to select each note individually in order to modify a note parameter.

The GRUPNOTE program uses three (3) methods to group notes:

- 1) Use CADAM's **GROUP FK** to group geometry prior to running the program. The program will automatically detect the grouped geometry and highlight the notes contained in the group.
- 2) Use the GRUPNOTE Program's **"TRAP MODE"** (similar to CADAM's /GROUP/TRAP/ function).
- 3) Use the GRUPNOTE Program's **"GROUP MODE"** to group notes by size, line weight or angle (ex. group all notes with a note size of 0.1).

After notes have been grouped, the GRUPNOTE program will allow you change the following note parameters:

- 1) Size
- 2) Character Line Width
- 3) Angle
- 4) Character Height
- 5) Character Width
- 6) Vertical Spacing
- 7) Horizontal Spacing

Also, you may delete the grouped notes, if desired.

GRUPNOTE Program

(User Instructions)

The GRUPNOTE Program will allow you to "group" existing notes in a CADAM drawing, and change the note parameters associated with the grouped notes.

Running The Program

Call up the drawing and change to the view/detail page containing the notes to be changed:

- o Press the ACCESS Key
- o Select /EXECUTE IUE PGM/
- o Select **GRUPNOTE**
- o Press the Y/N Key

The program's two main functions are "Grouping" Notes and "Changing" Notes.

Grouping Notes

The user has three (3) methods available for grouping notes:

- 1) Use CADAM's **GROUP FK** to group geometry prior to running the program. The program will automatically detect the grouped geometry and highlight the notes contained in the group.
- 2) Use the GRUPNOTE Program's **"TRAP MODE"** (similar to CADAM's /GROUP/TRAP/ function).
- 3) Use the GRUPNOTE Program's **"GROUP MODE"** to group notes by size, line weight or angle (ex. group all notes with a note size of 0.1).

Changing Notes

Once you have grouped all notes that are to be changed and selected /ACCEPT/, you are in **"CHANGE MODE"**. This allows you to change parameters of the grouped notes, either Size, Character Line Width, Angle or Other. Also, you can choose to Erase the grouped notes.

'Other' is only used when it is desirable to change the Note parameters independently of each other. For example, changing only the Character Width, while Character Height, Vertical Spacing and Horizontal Spacing remain the same. '.

'Size', on the other hand, will automatically change all parameters associated with Character Height (Character Width, Vertical Spacing and Horizontal Spacing).

Changes to 'Other' must be made AFTER changing 'Size', 'Char Line Width' and 'Angle'.

GRUPNOTE Program - User Instructions (Continued)

NOTE:

If the notes in your drawing contain color or line weight, some of the default parameters of your interactive Base CADAM session might be changed while running this IUE program. The two parameters known to be affected are FK TYPE/COLOR/MODE and FK NOTE/PARMS/LN-WT. The 'default color mode' and 'default character line weight' can be set back to the desired values, if needed, by performing the following steps.

To Turn Default Color Mode Off:

FK TYPE /COLOR/MODE/, Y/N

To Change Default Color Mode:

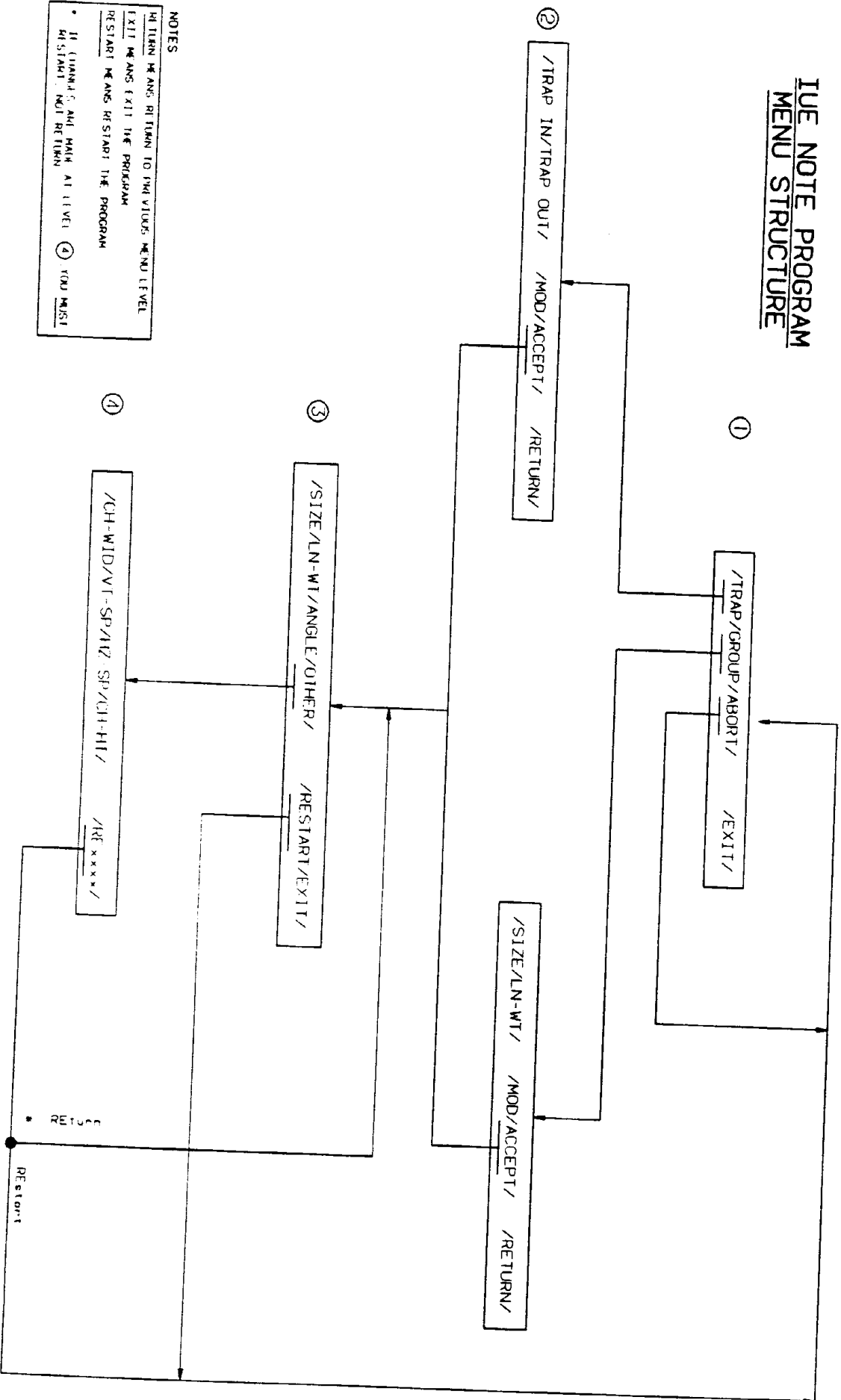
FK TYPE /COLOR/MODE/, key color no

To Change Default Character Line Weight:

FK NOTE /PARMS/LN-WT/, key char line width

This must be done because when notes are added through IUE, as is the case with the GRUPNOTE program, some of the IUE note parameters become the 'default' for the Base CADAM interactive scope session. This problem has been APARed with CADAM INC (see attached 'technical notes').

IUE NOTE PROGRAM MENU STRUCTURE



NOTES

RETURN MEANS RETURN TO PREVIOUS MENU LEVEL

EXIT MEANS EXIT THE PROGRAM

RESTART MEANS RESTART THE PROGRAM

• IF (UN)D.S. AND MAIN AT LEVEL ④ YOU MUST RESTART NOT RETURN

1/16/91

Tape files 2 & 3

CADRESTV (exec)

- a. Restores a group from tape without needing the subgroups entered
- b. VM/REXX
- c. Version & Modification level or Release Number: N/A
- d. Restores models from tape (usually a full backup) to specified CADAM group.
- e. Main program
- f. VM/SP, HPO 4+, CADAM 20.1.1+

CADUNA

- a. This exec builds an input file for use by CREATEMP exec of all user entries in the specified group.
- b. VM/REXX
- c. Version and modification level or release number: N/A
- d. Simplifies data base maint.- allows easy re-entry of users when rebuilding files.
- e. Main program
- f. Known to run with VM/SP, HPO 4 and + (not tested on XA) and

RXIUE (REXX- IUE interface)

- a. This interface is for CADAM 21+ and above running under VM/SP (of HPO) release 4 and above in "non-XA mode". This is an IUE application using IUCV to communicate with REXX programs.
- b. Assembler language
- c. RXIUE is currently version 3.1.1b
- d. Presently supports: Extract of groups, subgroups, model ids, model text, model info field: allows text, info field to be updated, models can be moved, copied, deleted. A priv table is used.
- e. Self loading nucleus extension
- f. VM/SP, HPO 4 and above (not XA), CADAM 21 and above.

Options specified: NOT DISK

The input tape is on a 3420-8 9-track tape drive at address 0181.
The tape was recorded at 8250 bpi and is in unlabeled format.

No volume name can be determined.

*** File 1.

This file is apparently in VMFPLC2 (4K) format.

FileName	FileType	FM	Format	LRecL	Records	Date	Time
CHKDRWID	EXEC	C1	V	72	120	04/30/91	13:48:20
DRAWMOVE	EXEC	C1	V	72	9	09/27/90	8:00:30
DRAWMOVE	XEDIT	C2	V	73	728	05/23/91	9:43:41
DRWARCH	EXEC	C1	V	72	83	05/21/91	10:38:52
DRWBUILD	EXEC	C1	V	73	71	05/21/91	10:33:48
DRWOREV	EXEC	C1	V	82	84	05/21/91	10:39:34
GETDRAW	EXEC	C1	V	72	36	08/14/90	15:33:24
IUEGEN	EXEC	C1	V	72	14	08/14/90	15:16:22
IUEKDC2	ASSEMBLE	C1	F	80	1999	05/09/91	8:12:09
IUEKDC2	AUXSP	C1	F	80	1	11/05/91	10:46:26
IUEKDC2	CPCPARMS	C1	F	80	6	03/05/91	9:12:34
IUEKDC2	EXEC	C1	F	130	33	08/14/90	15:26:43
IUEKDC2	LINK	C1	F	80	3	05/22/91	14:22:42
IUEKDC2	LOGFILE	C1	F	160	1	05/29/91	15:31:02
IUEKDC2	PRIVTABL	C1	F	80	27	08/13/91	8:27:44
RXIUE	ASSEMBLE	C1	F	80	1394	05/09/91	7:10:34
RXIUE	AUXSP	C1	F	80	3	06/19/91	9:04:06
RXIUE	DDC	C1	V	73	270	05/24/91	10:14:00
RXIUE	DDCTALK	C1	V	85	591	11/12/91	14:25:34
RXIUE	IUECON01	C1	F	80	90	05/24/91	12:03:47
RXIUE	IUELPSW	C1	F	80	4	06/19/91	9:05:08
RXIUEGEN	EXEC	C1	V	72	14	08/14/90	15:13:43

End of file 1 encountered after reading 134 blocks
containing 385K bytes. About 11 feet of tape was used.
The largest block was 4,005 bytes, the last block was
1,605 bytes, and the smallest block was 77 bytes.

*** File 2.

This file is apparently in VMFPLC2 (4K) format.

FileName	FileType	FM	Format	LRecL	Records	Date	Time
CADRESTV	EXEC	C1	V	73	155	04/24/91	12:48:00
CADUNA	EXEC	C1	V	71	120	04/24/91	10:10:47

End of file 2 encountered after reading 8 blocks
containing 17K bytes. About 1 foot of tape was used.
The largest block was 4,005 bytes, the last block was
805 bytes, and the smallest block was 77 bytes.

*** File 3.

End of file 3 encountered after reading 0 blocks
containing under 1K bytes. About 1 foot of tape was used.

SHARE PROGRAM LIBRARY SUBMITTAL FORM

University of Miami
SHARE Program Library Agency
P. O. Box 248011
Coral Gables, Florida 33124-4220
Attn: Fred Robinson

SPLA CONTROL NUMBER: _____

This form should be completed and submitted with the program package to the SHARE Program Library Agency at the address shown above. Standards and instructions for submitting programs are in the SHARE Program Library Agency User's Guide and Catalog Programs, or may be obtained from the SPLA.

- 1) Program Number (if new program, will be filled in by SPLA) _____
- 2) Title of Program CADRESTV EXEC1
- 3) System Type(s) (Machine) VMS/SP, HP 47 (XA?), CADAM 20.11 +
- 4) Search Keys _____
- 5) Programming Systems/Languages VW/REXX
- 6) Primary Subject Codes _____
- 7) Minimum System Requirements _____
- 8) New (N) or Revision (R) New
- 9) Date of Submittal 18/MAY/91
- 10) Documentation (number of pages of hardcopy submitted) 2
- 1) Author's Name and Address Ken Chamberlain
..... Prestolite Electric
..... Four Seagate
..... Toledo, OH 43691
- 2) Name and Address of Contact for Technical ..
Inquiries (if different from Author) ..
.....
.....
.....
- 3) Submitter's Installation Membership Code _____
- 4) Abstract (use reverse side of this form)

DISCLAIMER

Users should note that The University of Miami serves solely as the distribution agent for contributed programs and does not test or maintain them. They are distributed essentially in the original form submitted by the author. Neither the University of Miami nor SHARE Inc. makes any warranty, expressed or implied, as to the documentation, function, performance of the contributed programs.

SHARE PROGRAM LIBRARY SUBMITTAL FORM

The abstract should contain sufficient information for a reader to determine the value of the program. Subjects listed below may serve as a guide for information to include.

- a. Purpose of Program
- b. Programming Language Used
- c. Version and Modification level or Release Number
- d. Field of Application
- e. Type of routine (main program, subroutine, etc.)
- f. Specific description of machine requirements.

from tape

a) Restores a group of ~~without~~ ^{from tape} needing the subgroups entered

b) VM/Rev

c) N/A

d) Restores models from tape (usually a full backup) to specified CADAM group

e) main

f) VM/S2, HPO 4T, CADAM 3011T

An "Acknowledgement of Assistance" statement must be attached to this Submittal Form.

Conveyance of Rights:

"I hereby convey to SPLA all rights to these submitted materials, including, but not limited to, the unqualified right to reprint, reproduce, and publicly distribute this program, except that I expressly retain the rights to utilize, reprint, reproduce, and distribute the materials for my own purposes."

15) Signature of Submitter and Date

Lancelot A. Cantley 12/Nov/91

16) Signature of Installation Addressee (if SHARE Member)

To the best of my knowledge, my program entitled "VM/Rexx-CADAM IUE Interface" is free of any proprietary, secret, or confidential information belonging to any person or organization. I have not used the work, plans, procedures, systems, programs or names of any companies or individuals.

Additionally, this program is submitted with the full knowledge and consent of the author.

Ronald K Cantley 18/Nov/91

TAPE FINES
243

CCCCCCC	AAA	DDDDDD	RRRRRRR	EEEEEEEE	XX	XX	XX	XX
CCCCCCC	AA AA	DDDDDD	RRRRRRR	EEEEEEEE	XX	XX	XX	XX
CC	AA AA	DD DD	RR RR	EE	XX XX		XX XX	
CC	AAAAAAA	DD DD	RRRRRRR	EEEEEE	XXX		XXX	
CC	AAAAAAA	DD DD	RRRRRRR	EEEEEE	XXX		XXX	
CC	AA AA	DD DD	RR RR	EE	XX XX		XX XX	
CCCCCCC	AA AA	DDDDDD	RR RR	EEEEEEEE	XX	XX	XX	XX
CCCCCCC	AA AA	DDDDDD	RR RR	EEEEEEEE	XX	XX	XX	XX

VM/Rexx interface to Cadam Inc.'s Cadam System

Ken Chamberlain - Prestolite Electric Inc.

This interface was written for Cadam Rel 21+ and above running under VM/SP (or HPU) Release 4 and above in a Non-XA mode. Two programs are used: Iuekdc2 and RxIue. Written by Kenneth D. Chamberlain. No Warranty is Implied or Expressed. I assume no responsibility for any problems/damages the programs may cause directly or indirectly.

Iuekdc2 is an IUE application using IUCV to communicate with each Rexx program using RxIue. The VM Userid running Iuekdc2 MUST be in the request ids for each database you want to communicate with. must have the Cadam source disk accessed for the necessary loadlibs to execute. A 8-10 meg virtual machine should be big enough to run Iuekdc2. The VM userid must have 'IUCV ANY', 'IUCV ALLOW' and an 'OPTION MAXCONN 255' in the directory definition of this Userid. The default VM Userid as defined in RxIue program is 'CADREXX'.

I run a 'cad2' exec in 'Iuekdc2 exec' which is a modified 'load exec' which removes the global to 'acctlm loadlib'.

If you want to use the acctlm loadlib for Iuekdc2 you will have to define a password file for Iuekdc2 to read (actually Cadam accesses it I don't) for Iuekdc2's authority to the Data Bases.

The Server machine needs access to 8 Cms files (other than normal Cadam files on the Cadam Source disk).

1. 'Group Owner' - normally read from the Cadam source disk.
File 'Group Owner' defines each Group name and it's DBM.
You may wish to copy this to the Server's 'A' disk. You must remove any DBM's that do not have the server in their Request Ids.
If Iuekdc2 tries to read a group for which it is not authorized, Cadam will blow up Iuekdc2 and give the below mesg. I have Apar'ed this.
'CADO107E(READYX--): ILLEGAL GROUP NAME IN COMMON'
2. 'Iuekdc2 Cpcparms' - normally on Iuekdc2's 'A' disk.
File 'Iuekdc2 Cpcparms' is required by Cadam to run an IUE program.
3. 'Iuekdc2 Privtab1' - normally on Iuekdc2's 'A' disk.
4. 'Iuekdc2 Exec' - Executes the Iue program Iuekdc2.
5. 'Iuekdc2 Logfile' - History of Updates to a Database. If you did not install the default one, it will be created when 1st update occurs.
6. 'Accessim Loadlib' - Where the Iuekdc2 program is at.
7. 'Profile exec' - To auto start Iuekdc2 if Server is Autologged.
8. 'Iuekdc2 Link' - normally on Iuekdc2's 'A' disk. Used by 'Acclnki Exec' to link Iuekdc2 into the 'Accessim Loadlib'

Any updates to the database (move a drawing,copy a drawing,delete a drawing, update the text area) are LOGGED in file 'luekdc2 Logfile'.

Userid	Date	Time	Function	Grp	S-Grp	Drawing Id	Nuro	NO
CHAMBER	02/27/91	09:08:15	COPYDRAW	APD	DFTJAS	BOWLING SHEET	ENG	IL
CADPLOT	03/02/91	04:01:26	MOVEDRAW	REL	FL0001	SRP-2511	B1	UBS JB

The filedef to luemsg MUST NOT BE TO THE 'A' DISK. 'luekdc2 Exec' defines it to the printer. This is due to disk directory updates are performed only after all output files are closed and since luemsg file is always open, all updates to the 'A' disk (I.E. luekdc2 Logfile) are never written to the disk till End-Of-Job (and luekdc2 NEVER EOJ's).

Rxiue is the Rexx interface you use to 'talk' to the lue/lucv Server. Label 'Server' in the source code identifies the VM Userid of where luekdc2 is running. The default Userid is 'CADREXX'.

To generate Rxiue at your site:
Enter 'Rxiuegen' to assemble Rxiue assemble and generate the Rxiue nucleus extension module for you.

Note: Any parms that have a length of 0 then it will be treated as the end-of-parms and no other parms beyond it will be processed. I.E. sgroup='';a = rxiue('gettext','eng',sgroup,'testpart')
Sgroup's len=0 so 'testpart' will not be passed to luekdc2 and this call will fail.

Rxiue Commands:

`rxiue`

- Displays Version Number

`rxiue noterm`

- Suppress display of Rxiuemsg on console. Sometimes you don't want the 'free' display on the console if an error occurs.

`rxiue term`

- This is the 'Default'. Display Rxiuemsg on console IF return code from rxiue is not 0. Rxiuemsg is always set if a non 0 return for your exec to process it.

`rxiue end` (3.1.1a Update)

- Sever the connection to the server. Normally this is not required since Rxiue is an end-of-command routine it will sever the connect at the R; prompt. This command is included in case you have some use for it.

`a = rxiue('getgrps')`

- Places all group names in Rexx variables Cadgrp.x
- Cadgrp.0 = count of groups.

`a = rxiue('getsgtps','eng')`

- Places all sub-group names in Rexx variables Cadsgrp.x
- Cadsgrp.0 = count of sub-groups

`a = rxiue('getdrws','eng','tolxxx')`

- Places all drawing ids in Rexx variables Drwid.x
- Drwid.0 = count of drawing ids.

`a = rxiue('gettext','eng','tolxxx',drwid)`

- Places the 72 byte text string in Rexx variable Cadtext
- col 68-72 contains Julian last-filed date.
- col 64-67 contains 24-hour time when drawing was filed IF ... Cadgrptb had 'FILETIME' option for that group.

`a = rxiue('settext','eng','tolxxx',drwid)`

- Updates the 1st 67 characters of the text field in the drawing id requested using Rexx variable Cadtext.
- I will set the time in col:64-67 for you in case you don't have 'FILETIME' in the cadgrptb. Also, I will insert your Userid in col:51-58. If you don't like these 'free' updates to the text area you can always '*' that part of the code.

`drwid='IBM-2040LA'`

`a = rxiue('movedraw','eng','tolxxx',drwid,'eng','toljas',drwid)`

- Moves a drawing from the grp1,sgrp1,drwid1 to grp2,sgrp2,drwid2
- Note: you could rename the drawing also with this by changing the 2nd group drawing id. - Movedraw WILL NOT OVERFILE, if you get a dup drawing id it's up to you to take corrective action.

a = rxue('copydraw','eng','tolxxx',drwid,'eng','toljas',drwid)
- Copy a drawing from group1 to group2. Same as 'movedraw'
- except the original drawing is NOT erased.

a = rxue('deldraw','eng','tolxxx',drwid)
- Deletes a drawing.

Getattr will return any/all text strings associated with an element.
(which may be located on the DRAWING Page or the DETAIL Page)
(and/or may be NO-SHO elements on either Page)

attr=202;itype='1520' /* 202=local attribute, 1520=Balloon itype */
a = rxue('getattr','eng','tolxxx',drwid,attr)
- returns each text string associated with the attribute
- requested - for itype 1400 (Text Element) only.
- Values are returned into Rexx variable Cadattr.x.
- Cadattr.0 = number of string(s) found.
- NOTE: If the type of character set is 'Extended' the value(s)
- returned will be 'extended' (2 bytes per character to account
- for the special characters in the string. I.E. if the string has
- 'ABxC' (x being a 2 byte special character on the scope) the
- the value returned will be x'00C100C2xxxx00C3'.
- The X and Y coordinates (w/ 6 decimal positions) for each
- string are returned into Rexx variable Cadatxy.x with the
- X value in word one and the Y value in word two respectively.
- The Model Pointer of this element is returned into Rexx variable
- Cadmptr.x and is 8 bytes long.
- The Itype of this element is returned into Rexx variable
- Cadityp.x and is 5 bytes long. (I.E. text = 01400
- If no hit Cadattr.0 is set to 0.
- If only 5 parms are passed then Itype of 1400 is assumed.

a = rxue('getattr','eng','tolxxx',drwid,attr,itype)
- similar to above but the 6th parm may be used to specify
- an Itype other than the default Itype of Text-(1400)

a = rxue('getattr','eng','tolxxx',drwid,'*',itype)
- Here we ask for any text with a specified Itype without
- using an Attribute as part of the search.

a = rxue('getattr','eng','tolxxx',drwid,attr,'*')
- Here we ask for any text with a specified Attribute without
- using an Itype as part of the search.

modtext is the opposite of Getattr. Modtext will update (not create) a text string on a Cadam drawing. Getattr must be run first to get the string along with the Itype and Model-pointer of the string.

cadityp='01400' or cadityp = cadityp.2 (if updating 2nd variable)
cadityp length must be 5 character. (from a 'getattr' function.

cadmptr='00000F3E' or cadmptr = cadmptr.2 (if updating 2nd variable)
cadmptr length must be 8 characters. (from a 'getattr' function.

cadattr='My New Update String' (max length I support is 256 bytes)
cadattr is Case-Sensitive. The above Mixed-case will be entered onto the drawing as Mixed-case.

a = rxline('modtext','eng','tolxxx',drwid)

- Here we are updating a text string belong to an element on
- this drawing. Cadityp, Cadmptr, and Cadattr are required
- Rexx variables for me to pull the information I need to
- do the update. Due to the fact that an update can alter the
- Model Pointer, after the update the 'New' Model Pointer for
- update will set in Rexx variable 'cadmptr' for you in case you
- need to update this variable before doing another 'getattr'.
- Please note that only certain Itypes can be modified as noted
- in the Iue Programmers Guide under UEDIT calls. As of this
- writing the Itypes supported are: 01100 User Attribute,
- 01308 Spline Dimension, 01400 Text element, 01500 2D Arrow,
- 01520 Balloon, 01530 Textline, 01540 Annotation Line
- 01550 Annotation Arc, 06210 EC Symbol, 31400 3D Annotation
- Cadam Ver 3 Rel 1 Mod 1 added the following supported Itypes:
- 1300 Horizontal Dimension, 1301 Vertical Dimension,
- 1302 Parallel Dimension, 1303 Normal Dimension,
- 1304 Angle Dimension, 1305 Radius Dimension,
- 1306 Diameter Dimension, 1307 Circular Arc Dimension,
- 1308 Spline Dimension, 1309 Horizontal Datum Line,
- 1310 Vertical Datum Line, 1311 Chamfer Dimension
- At this time I do not support the 06210 EC Symbol.
- BTW: a return code of 3 normally means cadmptr value is invalid.

Rxiue Return codes:

A is the return code from the function called.

0 = Function completed with no errors.

Any errors below 35 are the standard Cadam IUE errors.

I.E. 10 - duplicate drawing id (if a move/copy would overlay an existing drawing).

Above code 34 is an error generated by Rxiue and/or Iuekdc2 that needs your attention.

090 - Unknown Iue Error (Iue error was > 34)

092 - Getattr Error (I.E. Invalid or Non-numeric or Missing Itype/Attr.

093 - Invalid Group/Sub-Group

094 - Not Authorized for DelDraw (Delete)

095 - Not Authorized for Copydraw

096 - Not Authorized for Movedraw

097 - Not Authorized for Gettext/Puttext

098 - Not Authorized for that Group/Sub-Group

099 - Invalid Function, and other Bad things.

255 - Iucv Error

Rexx variable 'Rxiuemsg' will contain the text of the error message if the return code is not 0 and it will also be display on the terminal unless a 'rxiue noterm' is run. The 'rxiue term' will set the display back on.

A = 255 is an Iucv error, the text of the error will be displayed and Rxiue will abort.

Examples included with the source code:

- Drawmove exec/xedit : Move/Copy/Delete/Display text by Attribute or ltype/Display 72-Byte Text area.
Full Screen xedit using Rexx to display Group, Sub-Group, and Drawing Id's. Eliminates the need to use a Scope (S080 or whatever) to perform drawing management.
- Onkdrwid exec : Compares attribute 201 at PEI (Drawing Id on the drawing with what it is filed under. It's runs against all of our Release groups.
- Drwbuild exec : Extracts all Drawing Id's and builds a cms file with group, sub-group, drawing id.
- Drwarch exec : Search our Archive area for drawings with multiple version levels. If found moves the older version(s) drawing to an unload user for a later tape backup that will be run.
- Drworev exec : Moves any drawing the in Archive area that is over 90 days old to the unload user for a later tape backup. File Date is extracted using 'gettext' for each drawing and compared to current run date. This exec requires 'EDATE EXEC' found on many Vm Tools Tapes.

Future Enhancements:

Allow semi-permanent connections to avoid multi-connects by either making RxIue an 'End of Command' routine and break the connection at R; or allow user to break connection by a 'RxIue End' command. Calls will run a lot faster though since I don't have reconnect (Iucv Connect) many times when running an exec using RxIue.

The above has been tested at Pei for stability the past 2 weeks with no problems. The updates to RxIue is included on the tools tape. 'RxIue Iuecon01'. So far the testing has gone very well.

Also being tested is having Iuekdc2 remember via the Iucv connection what the last Ulopen call was, and if called again by the same user then skip the call, sense it's already open. This really increases the memory requirement for Iuekdc2 if a Ulopen is called since I have to maintain a separate Model Space Reference Number for each user connected to me. NOTE: CADAM only allows four(4) Model Spaces to be opened at one time per program. IF a 5th Model Space is called for you get a RC=3 Invalid Calling Parameter. This is a Cadam restriction and they probably won't change it.

Allow 'Open' 'Update (U1Add,etc..)' 'File' commands to update a drawing w/o a forced file after each function, but the above restriction (MODNO < 5) puts a damper on it. The routine will probably be added anyway as my time permits but users will have to be aware of a possible RC=3 when trying to update a drawing. Updating would allow us to use U1ADD to create elements (I.E. 2D Cubic Parametric Splines, 2D Circles, etc...), do a modtext, maybe add some text, THEN file the drawing.

Rxiue-Cadam Drawing File Mover

V2.2

Select "From Group" below and Press Enter

- APD	- ARC	- ARCH	- CAD	- CLE	- DEC	- ENG
- GAI	- OBS	- REL	- RELA	- RELB	- RELC	- RELO
- RELF	- RELG	- RELJ	- RELK	- RELN	- RELP	- RELR
- RELS	- RELU	- RELX	- SYSD	- WAG		

Rxiue-Cadam Drawing File Mover

V2.2

Select "From Sub-Group" below and Press Enter

Group: ENG

- CBDS	- CLEAN	- CURVES	- DATASH	- DECCHK	- DEMO	- DFTCHK
- DFTMNR	- EGFORM	- ENGARC	- FMEA	- GAICLK	- M70DBH	- ORACLE
- QCHART	- SALRJG	- START	- STARTM	- TOLAHF	- TOLAV	- TOLJAK
- TOLJDP	- TOLKDC	- TOLMFG	- TOLMSC	- TOLRDH	- TOLSLN	- TRAIN
- WAGCHK						

Rxiue-Cadam Drawing File Mover

V2.2

Cmnds: 'M'ove/'C'opy/'D'elete/'A'ttr/'T'ext-72/'I'type

98 Dwgs in ENG TOLJDP

- EO-CATEPILLAC	100	- EX-210836	C1	- GRAPH DET D	
- EO-29285A	C1A	- EX-210839	C1	- HB-WORLDCCLASS	C1
- EO-29285A	C1G	- EX-210840	C1	- HB_PO92-15	D1L
- EO-29285A	C1O	- EX-210841	B1	- HB_PO92-23	D1L
- EO-29383A	C1A	- EX-210881	C1	- JAN.SCHEDFE10	
- EO-29383A	C1O	- EX-210882	D1	- JDPT-MODIFIED	D1L/
- EO-29414	B1	- EX-210887	B1	- JDPT-MODITRIM	D1L/
- EO-29442	C1A	- EX-210888	B1	- JDP2-MODIFIED	D1L/
- EO-29442	D1O	- C ARCSCHEDII		- LAV-LO	
- EX-CASSY	B1	- C ARCSCHEDUL		- MTR-CONTROL	D1
- EX-210174	C1	- BDX-SHIELD	B1	- MTR-CONTROL2	D1
- EX-210268	B1	- BDX-SPACER	B1	- MTR-CONTROL3	C1A
- EX-210330	D1	- CADTALK		- NEWT-DETAI725	D1L/
- EX-210330V2	D1	- CARD		- NEWT-MODIT725	D1L/
- EX-210530	C1	- CAT1	D 1LL	- NEW2-MODIT725	D1L/
- EX-210533	B1	- CLARKSCHED		- OUTL-MODIT725	D1L/
- EX-210533V2	B1	- CONTACTOR	D1G	- PRESENTOR	D1G

Rxiue-Cadam Drawing File Mover

V2.1.1

Select "To Group" below and Press Enter

<input type="checkbox"/> APD	<input type="checkbox"/> ARC	<input type="checkbox"/> ARCH	<input type="checkbox"/> CAD	<input type="checkbox"/> CLE	<input type="checkbox"/> DEC	<input type="checkbox"/> ENG
<input type="checkbox"/> GAI	<input type="checkbox"/> OBS	<input type="checkbox"/> REL	<input type="checkbox"/> RELA	<input type="checkbox"/> RELB	<input type="checkbox"/> RELC	<input type="checkbox"/> RELD
<input type="checkbox"/> RELF	<input type="checkbox"/> RELG	<input type="checkbox"/> RELJ	<input type="checkbox"/> RELK	<input type="checkbox"/> RELN	<input type="checkbox"/> RELP	<input type="checkbox"/> RELR
<input type="checkbox"/> RELS	<input type="checkbox"/> RELU	<input type="checkbox"/> RELX	<input type="checkbox"/> SYSD	<input type="checkbox"/> WAG		

Rxiue-Cadam Drawing File Mover

V2.1.2

Select "To Sub-Group" below and and Press Enter

Group: ENG

<input type="checkbox"/> CBDS	<input type="checkbox"/> CLEAN	<input type="checkbox"/> CURVES	<input type="checkbox"/> DATASH	<input type="checkbox"/> DECCHK	<input type="checkbox"/> DEMO	<input type="checkbox"/> DFTCHK
<input type="checkbox"/> DFTMNR	<input type="checkbox"/> EGFORM	<input type="checkbox"/> ENGARC	<input type="checkbox"/> FMEA	<input type="checkbox"/> GACHK	<input type="checkbox"/> M70DBH	<input type="checkbox"/> ORACLE
<input type="checkbox"/> QCHART	<input type="checkbox"/> SALRJC	<input type="checkbox"/> START	<input type="checkbox"/> STARTM	<input type="checkbox"/> TOLAHF	<input type="checkbox"/> TOLAV	<input type="checkbox"/> TOLJAK
<input type="checkbox"/> TOLJDP	<input type="checkbox"/> TOLKDC	<input type="checkbox"/> TOLMFG	<input type="checkbox"/> TOLMSC	<input type="checkbox"/> TOLRDH	<input type="checkbox"/> TOLSLN	<input type="checkbox"/> TRAIN
<input type="checkbox"/> WAGCHK						

You have selected the following Drawings to be copied

From Group= ENG , Sub-Group= TOLJDP

To Group= ENG , Sub-Group= TOLKDC

Drawid= ARCSCHEDII

Drawid= ARCSCHEDUL

Enter "Y" to confirm the copy.

Y

Beginning Copy.... Please wait.

ARCSCHEDII **Failed**

** 095 You are not Authorized to Copy to that area. **

ARCSCHEDUL **Failed**

** 095 You are not Authorized to Copy to that area. **

Press Enter to continue....

SHARE PROGRAM LIBRARY SUBMITTAL FORM

The abstract should contain sufficient information for a reader to determine the value of the program. Subjects listed below may serve as a guide for information to include.

- a. Purpose of Program
- b. Programming Language(s) Used
- c. Version and Modification level or Release Number
- d. Field of Application
- e. Type of routine (main program, subroutine, etc.)
- f. Specific description of machine requirements.

a) This exec builds an input file for use by CREITEM²
exec of all user entries in the specified group

b) IBM/360X

c) N/A

d) Simplifies data base maint - allows easy reentry of
users when rebuilding files

e) Main

f) Known to run with IBM SP HPC 4 and above (not tested on x4)
CAMAM 20.11 and above

An "Acknowledgement of Assistance" statement must be attached to this Submittal Form.

Conveyance of Rights:

"I hereby convey to SPLA all rights to these submitted materials, including, but not limited to, the unqualified right to reprint, reproduce, and publicly distribute this program, except that I expressly retain the rights to utilize, reprint, reproduce, and distribute the materials for my own purposes."

15) Signature of Submitter and Date

Kandel & Carley 10/Nov/91

16) Signature of Installation Addressee (if SHARE Member)

SHARE PROGRAM LIBRARY SUBMITTAL FORM

University of Miami
SHARE Program Library Agency
P. O. Box 248011
Coral Gables, Florida 33124-4220
Attn: Fred Robinson

SPLA CONTROL NUMBER: _____

This form should be completed and submitted with the program package to the SHARE Program Library Agency at the address shown above. Standards and instructions for submitting programs are in the SHARE Program Library Agency User's Guide and Catalog Programs, or may be obtained from the SPLA.

- 1) Program Number (if new program, will be filled in by SPLA) _____
- 2) Title of Program CADUNA
- 3) System Type(s) (Machine) VM/SP, HP2 2 and above (VAX) 386/20
- 4) Search Keys _____
- 5) Programming Systems/Languages VX-Rexx
- 6) Primary Subject Codes _____
- 7) Minimum System Requirements _____
- 8) New (N) or Revision (R) new
- 9) Date of Submittal 15 / Nov / 91
- 10) Documentation (number of pages of hardcopy submitted) 2
- 1) Author's Name and Address Ken Chamberlain
..... Prestulite Electric
..... Four Senagate
..... Toledo, OH 43601
- 2) Name and Address of Contact for Technical ..
Inquiries (if different from Author)
.....
.....
- 3) Submitter's Installation Membership Code _____
- 4) Abstract (use reverse side of this form)

DISCLAIMER

Users should note that The University of Miami serves solely as the distribution agent for contributed programs and does not test or maintain them. They are distributed essentially in the original form submitted by the author. Neither the University of Miami nor SHARE Inc. makes any warranty, expressed or implied, as to the documentation, function, performance of the contributed programs.

To the best of my knowledge, my program entitled "VM/Rexx-CADAM IVE Interface" is free of any proprietary, secret, or confidential information belonging to any person or organization. I have not used the work, plans, procedures, systems, programs or names of any companies or individuals.

Additionally, this program is submitted with the full knowledge and consent of the author.

Randal E. Cantley 18/Nov/91

SHARE PROGRAM LIBRARY SUBMITTAL FORM

The abstract should contain sufficient information for a reader to determine the value of the program. Subjects listed below may serve as a guide for information to include.

- a. Purpose of Program
- b. Programming Language Used
- c. Version and Modification level or Release Number
- d. Field of Application
- e. Type of routine (main program, subroutine, etc.)
- f. Specific description of machine requirements.

- a) This interface is for CADAM 21+ and above running under VM/SP (4190) Release 4 and above in non-XA mode. This is an IDE application using IUCV to communicate with PEVS programs.
- b) Assembler language.
- c) RXIDE is currently version 3.1.1b.
- d) Presently supports: Extract of groups, subgroups, model ds, model text, model info field; allows text info field to be updated, models can be moved, copied, deleted. A sort table is used.
- e) Self loading nucleus extension.
- f) VM/SP, 4190 4 and above (not XA), CADAM 21 and above.

An "Acknowledgement of Assistance" statement must be attached to this Submittal Form.

Conveyance of Rights:

"I hereby convey to SPLA all rights to these submitted materials, including, but not limited to, the unqualified right to reprint, reproduce, and publicly distribute this program, except that I expressly retain the rights to utilize, reprint, reproduce, and distribute the materials for my own purposes."

- 15) Signature of Submitter and Date Ronald D. Canady 18 Nov 79
- 16) Signature of Installation Addressee (if SHARE Member) _____

SHARE PROGRAM LIBRARY SUBMITTAL FORM

University of Miami
SHARE Program Library Agency
P. O. Box 248011
Coral Gables, Florida 33124-4220
Attn: Fred Robinson

LA CONTROL NUMBER: _____

This form should be completed and submitted with the program package to the SHARE Program Library Agency at the address shown above. Standards and instructions for submitting programs are in the SHARE Program Library Agency User's Guide and Catalog Programs, or may be obtained from the SPLA.

- 1) Program Number (if new program, will be filled in by SPLA) _____
- 2) Title of Program RX1UE (2KX MC INTERFACE)
- 3) System Type(s) (Machine) ^{4 channel} VM/SP-400 (4XA), SAGAM 21 and above
- 4) Search Keys _____
- 5) Programming Systems/Languages Assembler
- 6) Primary Subject Codes _____
- 7) Minimum System Requirements _____
- 8) New (N) or Revision (R) NEW
- 9) Date of Submittal 18/Nov/91
- 0) Documentation (number of pages of hardcopy submitted) 10
- 1) Author's Name and Address Ken Chamberlain
PRESTONITE Electric
Four Seagate
Toledo, OH 43691
- 2) Name and Address of Contact for Technical ..
Inquiries (if different from Author) _____

- 3) Submitter's Installation Membership Code _____
- 4) Abstract (use reverse side of this form)

DISCLAIMER

Users should note that The University of Miami serves solely as the distribution agent for contributed programs and does not test or maintain them. They are distributed essentially in the original form submitted by the author. Neither the University of Miami nor SHARE Inc. makes any warranty, expressed or implied, as to the documentation, function, performance of the contributed programs.

To the best of my knowledge, my program entitled "VM/Rexx-CADAM
IOE Interface" is free of any proprietary, secret, or confidential
information belonging to any person or organization. I have not
used the work, plans, procedures, systems, programs or names of any
companies or individuals.

Additionally, this program is submitted with the full knowledge
and consent of the author.

Randall D. Cantley 18/Nov/91

SHARE PROGRAM LIBRARY SUBMITTAL FORM

University of Miami
SHARE Program Library Agency
P. O. Box 248011
Coral Gables, Florida 33124-
Attn: Fred Robinson

SPLA CONTROL NUMBER: _____

This form should be completed and submitted with the program package to the SHARE Program Library Agency at the address shown above. Standards and instructions for submitting programs are in the SHARE Program Library Agency User's Guide and Catalog of Programs, or may be obtained from the SPLA.

- (1) Program Number (if new program, will be filled in by SPLA) _____
- (2) Title of Program EDUC AND INCLTIL
- (3) System Type(s) (Machine)
- (4) Search Keys
- (5) Programming Systems/Languages
- (6) Primary Subject Codes VIM, CMS, XEDIT, FORTRAN, CADAM
- (7) Minimum System Requirements
- (8) New (N) or Revision (R) VIM, FORTRAN, CADAM ACCESS AND
- (9) Date of Submittal N
- (10) Documentation (number of pages of hardcopy submitted)
- (11) Author's Name and Address BILL SHERRILL (606) 255-1501
CLARK MATERIAL HANDLING CO
333 WEST VINE STREET
LEXINGTON KY 40507
- (12) Name and Address of Contact for Technical ..
Inquiries (if different from Author)
- (13) Submitter's Installation Membership Code
- (14) Abstract (use reverse side of this form)

DISCLAIMER

Users should note that The University of Miami serves solely as the distribution agent for contributed programs and does not test or maintain them. They are distributed essentially in the original form submitted by the author. Neither the University of Miami nor SHARE Inc. makes any warranty, expressed or implied, as to the documentation, function, performance of the contributed programs.

TAPE FILE 5

SHARE PROGRAM LIBRARY SUBMITTAL FORM

University of Miami
SHARE Program Library Agency
P. O. Box 248011
Coral Gables, Florida 33124-4220
Attn: Fred Robinson

SPLA CONTROL NUMBER: _____

This form should be completed and submitted with the program package to the SHARE Program Library Agency at the address shown above. Standards and instructions for submitting programs are in the SHARE Program Library Agency User's Guide and Catalog of Programs, or may be obtained from the SPLA.

- (1) Program Number (if new program, will be filled in by SPLA) _____
- (2) Title of Program BEAR (Bearing and Distance)
- (3) System Type(s) (Machine) _____
- (4) Search Keys _____
- (5) Programming Systems/Languages VS FORTRAN Z, JUE
- (6) Primary Subject Codes _____
- (7) Minimum System Requirements _____
- (8) New (N) or Revision (R) N
- (9) Date of Submittal _____
- (10) Documentation (number of pages of hardcopy submitted) 7
- (11) Author's Name and Address Kelly A. Mooney
South Carolina Electric & Gas Co.
1426 Main Street (mc 147)
Columbia, SC 29201
- (12) Name and Address of Contact for Technical ..
Inquiries (if different from Author) _____

- (13) Submitter's Installation Membership Code _____
- (14) Abstract (use reverse side of this form)

DISCLAIMER

Users should note that The University of Miami serves solely as the distribution agent for contributed programs and does not test or maintain them. They are distributed essentially in the original form submitted by the author. Neither the University of Miami nor SHARE Inc. makes any warranty, expressed or implied, as to the documentation, function, performance of the contributed programs.

BEAR PROGRAM

(ABSTRACT)

The BEAR Program is an interactive, IUE program. It is intended to supplement CADAM's LINE FK by allowing a scope operator to create a line based on a bearing and distance. The program also attaches a note containing the bearing and distance parallel to the line. The starting point of the first line is determined by the user, the starting point of subsequent lines is the ending point of the previous line.

This program is useful when creating property plats or working in any drawing where survey boundaries need to be shown.

Bearing and Distance information is entered at the keyboard in the format shown below:

DIR1,DD,MM,SS,DIR2,DISTANCE

Where:

DIR1 is either N or S

DD is a Positive Integer value less than or equal to 90.

MM is a Positive Integer value less than 60.

SS is a Positive Integer value less than 60.

DIR2 is either E or W

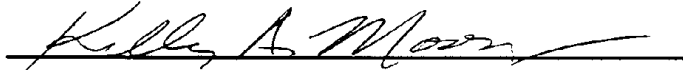
DISTANCE is a Positive Real value.

Example:

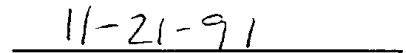
N,84,34,59,E,123.5

Acknowledgment of Assistance

To the best of my knowledge, my program entitled "**BEAR**" is free of any proprietary, secret, or confidential information belonging to any person or organization. Where I have used the work, plans, procedures, systems, programs or names of companies or individuals, I have obtained their permission to do so.

A handwritten signature in cursive script, reading "Kelly A. Mooney", is written over a horizontal line.

Kelly A. Mooney
(Program Author)

A handwritten date "11-21-91" is written over a horizontal line.

Date

BEAR Program

(Bearing and Distance)

Version 2.00

November 20, 1991

**Program Developed
by**

South Carolina Electric & Gas Company

Table of Contents

	<u>Page</u>
Disclaimer	3
Abstract	4
User Instructions	5

**DISCLAIMER OF WARRANTY
LIMITATION OF LIABILITY**

SOUTH CAROLINA ELECTRIC & GAS COMPANY (SCE&G) DISCLAIMS ALL WARRANTIES EXPRESSED OR IMPLIED, INCLUDING, BUT NOT LIMITED TO ANY IMPLIED WARRANTY OF MERCHANTABILITY OR FITNESS FOR A PARTICULAR PURPOSE AS TO THE DOCUMENTATION, FUNCTION, OR PERFORMANCE OF THIS PROGRAM. THIS SOFTWARE PROGRAM IS PROVIDED "AS IS". THE ENTIRE RISK AS TO THE RESULTS AND PERFORMANCE OF THE PROGRAM IS ASSUMED BY YOU. SCE&G DOES NOT WARRANT, GUARANTEE, OR MAKE ANY REPRESENTATIONS REGARDING THE USE OF, OR THE RESULTS OBTAINED WITH THE PROGRAM IN TERMS OF CORRECTNESS AND RELIABILITY OR LEGALITY. IN NO EVENT SHALL SCE&G BE LIABLE FOR ANY LOSS OF PROFIT OR ANY OTHER COMMERCIAL DAMAGE INCLUDING BUT NOT LIMITED TO SPECIAL, INCIDENTAL, CONSEQUENTIAL OR OTHER DAMAGES.

UNDER ANY CIRCUMSTANCE AND WITHOUT ALTERATION OF THE EFFECT OF THE ABOVE PARAGRAPH, SCE&G'S LIABILITY FOR DAMAGES, FOR ANY CAUSE WHATSOEVER AND REGARDLESS OF FORM OF ACTION, SHALL NOT EXCEED THE FEES ACTUALLY PAID FOR THE SOFTWARE.

BEAR PROGRAM

(ABSTRACT)

The BEAR Program is an interactive, IUE program. It is intended to supplement CADAM's LINE FK by allowing a scope operator to **create a line based on a bearing and distance. The program also attaches a note containing the bearing and distance parallel to the line.** The starting point of the first line is determined by the user, the starting point of subsequent lines is the ending point of the previous line.

This program is useful when creating property plats or working in any drawing where survey boundaries need to be shown.

Bearing and Distance information is entered at the keyboard in the format shown below:

DIR1,DD,MM,SS,DIR2,DISTANCE

Where:

DIR1 is either N or S

DD is a Positive Integer value less than or equal to 90.

MM is a Positive Integer value less than 60.

SS is a Positive Integer value less than 60.

DIR2 is either E or W

DISTANCE is a Positive Real value.

Example:

N,84,34,59,E,123.5

BEAR Program

(User Instructions)

The BEAR Program will create an unlimited number of lines based on a starting point and Bearing and Distance Data.

Running The Program

Call up the drawing, change to the desired view and set view scale to "1".

- o Press the ACCESS Key
- o Select /EXECUTE IUE PGM/
- o Select **BEAR**
- o Press the Y/N Key

Refer to the Messages and Menus as you run the program.

- o Define the point where the first line is to begin. This may be done by selecting an existing point, indicating a point, or keying in the coordinates.
- o Key in the bearing and distance of the line using the following format:

DIR1,DD,MM,SS,DIR2,DISTANCE

Where,

DIR1 is either N or S

DD is a Positive Integer value less than or equal to 90.

MM is a Positive Integer value less than 60.

SS is a Positive Integer value less than 60.

DIR2 is either E or W

DISTANCE is a Positive Real value.

Each of the above is separated by a comma.

Example,

N,84,34,59,E,123.5

If you key in bad data (incorrect format), the program will recognize this and return an error message and let you try again.

BEAR Program - User Instructions (Continued)

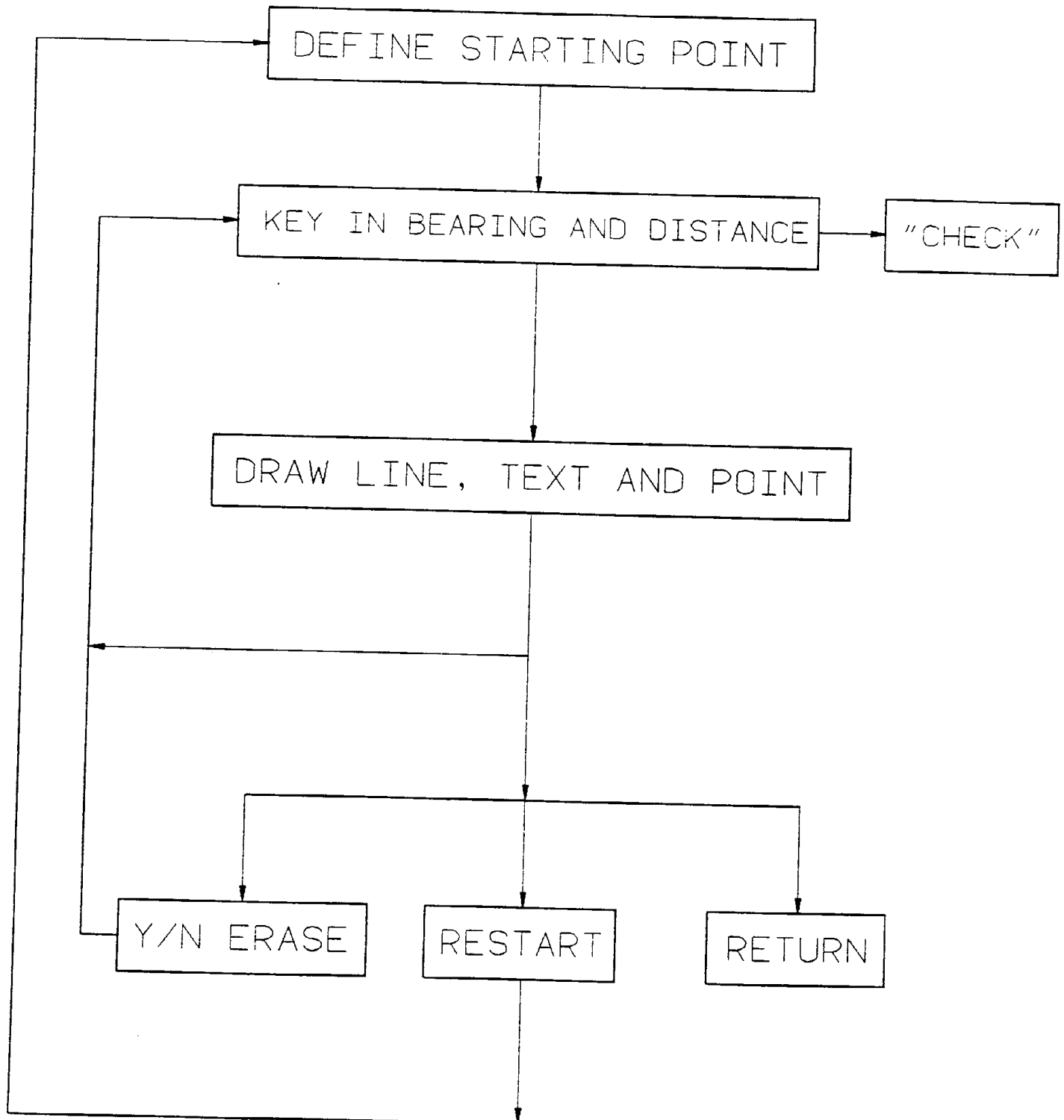
The YN reject function has been activated. If for some reason a line (with note attached) is created that you do not want, you may erase it with the YN key. If you decide you want it back, just hit YN again.

Continue entering Bearings and Distances until you are finished, then select "RETURN" followed by "KEEP" to save.

You can begin another set of Bearings and Distances by selecting "RESTART" at the bottom of the screen.

NOTE: If you are using this program to create a closed boundary, working in the clockwise direction will cause the text to appear on the inside of the line, working in the counter-clockwise direction will cause the text to appear on the outside of the line.

"BEAR"



TAPE KEY

CMS TAPE DUMP FORMAT

To Load Files to "A" disk, type:

TAPE LOAD * * A

File 1 - GRUPNOTE SOURCE (Main Program & Subroutines)

GRUPNOTE FORTRAN A

Recfm F Lrecl 80 Records 2203

File 2 - BEAR Source (Main Program & Subroutines)

BEAR FORTRAN A

Recfm F Lrecl 80 Records 770

SHARE PROGRAM LIBRARY SUBMITTAL FORM

University of Miami
SHARE Program Library Agency
P. O. Box 248011
Coral Gables, Florida 33124-4220
Attn: Fred Robinson

SPLA CONTROL NUMBER: 3700-15.D.002

This form should be completed and submitted with the program package to the SHARE Program Library Agency at the address shown above. Standards and instructions for submitting programs are in the SHARE Program Library Agency User's Guide and Catalog of Programs, or may be obtained from the SPLA.

- (1) Program Number (if new program, will be filled in by SPLA) _____
- (2) Title of Program GRUPOTE CADRESTV, CAOUNA
RZINE, FOWG, IUEWTL, BEAR, TRACE & REPL
- (3) System Type(s) (Machine) _____
- (4) Search Keys _____
- (5) Programming Systems/Languages SEE INDIVIDUAL INSTRUCTIONS
- (6) Primary Subject Codes _____
- (7) Minimum System Requirements _____
- (8) New (N) or Revision (R) N
- (9) Date of Submittal 7/13/92
- (10) Documentation (number of pages of hardcopy submitted) _____
- (11) Author's Name and Address MICHELLE LEWIS
DASSAULT SYSTEMES OF AMERICA
2500 WEST Empire Avenue
BURBANK, CA 91504
- (12) Name and Address of Contact for Technical .. Same -
Inquiries (if different from Author) _____
- (13) Submitter's Installation Membership Code _____
- (14) Abstract (use reverse side of this form) _____

DISCLAIMER

Users should note that The University of Miami serves solely as the distribution agent for contributed programs and does not test or maintain them. They are distributed essentially in the original form submitted by the author. Neither the University of Miami nor SHARE Inc. makes any warranty, expressed or implied, as to the documentation, function, performance of the contributed programs.

VMFPLC2

Author: Michelle Lewis

Description- The tape submitted is in the operating form of VM. This tape contains Trace and Replay and various IUE and REXX utilities which are described on their individual submittals.

Trace and Replay is a tool that records and replays a sequence of events called a scenario. During the interactive session scope attentions are captured, recorded, and stored in an external file. The recorded scenarios can then be called from storage and replayed on the scope. The Trace and Replay program can be used on CADAM's Version 3 Release 1 and Version 3 Release 2.

LARGE REEL

THIS TAPE IS IN VMFPLC2 FORMAT 1600 BPI
AND CONTAINS SEVEN FILES.

TO UNLOAD THE FIRST FILE, TYPE

VMFPLC2 LOAD **

* FILE ONE - CONTENTS (GRUPNOTE)

vmfplc2 scan **

SCANNING....

BLDCYC	DATA	X1
BLDCYC	FORTRAN	X1
CIRDIR	COPY	X1
CIR2D	COPY	X1
CIR3D	COPY	X1
CLCADM	COPY	X1
CLCADM	LINK1	X1
CLCADM	LINK2	X1
CLCADMPP	COPY	X1
CLMACLIB	COPY	X1
COMM	COPY	X1
COMPCL	EXEC	X1
COMPCLEX	COPY	X1
CONVERT	EXEC	X1
DCLDCV	COPY	X1
FORTRAN	COPY	X1
IUEEND	COPY	X1
IUEPRM	COPY	X1
IUERPT	FORTRAN	X1
IUESTR	COPY	X1
LOADCUE	COPY	X1
LOADDRAW	COPY	X1
MOTION	COPY	X1
MULTAX	COPY	X1
NC	DRAW	X1
NC2DPT	COPY	X1
NC3DPT	COPY	X1
NUPASS	COPY	X1
PARTSU	COPY	X1
POSTCM	COPY	X1
PTVECTOR	FORTRAN	X1
RQMS	COPY	X1
SCOPES	COPY	X1
SPLN2D	COPY	X1
SPLN3D	COPY	X1
SURFAC	COPY	X1
SURFMEAS	FORTRAN	X1
TOOLAX	COPY	X1
USAGE	COPY	X1
USECYCLE	FORTRAN	X1
USECYCLE	NURESTOR	X1
XQAPT	COPY	X1
21IMAGE	EXEC	X1

END-OF-FILE OR END-OF-TAPE

F I L E T W O (CADRESTV - PART ONE)

TO UNLOAD THE SECOND FILE ONLY,

ENTER:

TAPE REW

TAPE FSF 1

VMFPLC2 LOAD * *

* * * * *

* FILE TWO CONTENTS:

vmfplc2 scan * *

SCANNING....

CHKDRWID	EXEC	X1
DRAWMOVE	EXEC	X1
DRAWMOVE	XEDIT	X2
DRWARCH	EXEC	X1
DRWBUILD	EXEC	X1
DRWOREV	EXEC	X1
GETDRAW	EXEC	X1
IUEGEN	EXEC	X1
IUEKDC2	ASSEMBLE	X1
IUEKDC2	AUXSP	X1
IUEKDC2	CPCPARMS	X1
IUEKDC2	EXEC	X1
IUEKDC2	LINK	X1
IUEKDC2	LOGFILE	X1
IUEKDC2	PRIVTABL	X1
RXIUE	ASSEMBLE	X1
RXIUE	AUXSP	X1
RXIUE	DOC	X1
RXIUE	DOCTALK	X1
RXIUE	IUECON01	X1
RXIUE	IUELPSW	X1
RXIUEGEN	EXEC	X1

END-OF-FILE OR END-OF-TAPE

* * * * *

F I L E T H R E E (CADRESTV - PART TWO)

TO UNLOAD THE THIRD FILE ONLY,

ENTER:

TAPE REW

TAPE FSF 2

VMFPLC2 LOAD * *

* * * * *

* FILE THREE CONTENTS:

vmfplc2 scan * *

SCANNING....

CADRESTV	EXEC	X1
CADUNA	EXEC	X1

END-OF-FILE OR END-OF-TAPE

* * * * *

F I L E F O U R (FDWG AND IUEUTIL)

TO UNLOAD THE FOURTH FILE ONLY,

ENTER:

TAPE REW

TAPE FSF 3

VMFPLC2 LOAD * *

* * * * *

* FILE FOUR CONTENTS:

vmfplc2 scan * *

SCANNING....

IUEUTIL	USAGE	X1
IUEUTIL	LINK	X1
IUEUTIL	EXEC	X1
IUEUTIL	FORTRAN	X1
JDATE	FORTRAN	X1
FDWG	FORTRAN	X1
FDWG	USAGE	X1
FDWG	EXEC	X1
FDWG	XEDIT	X2

END-OF-FILE OR END-OF-TAPE

* * * * *

F I L E F I V E (GRUPNOTE AND BEAR)

TO UNLOAD THE FIFTH FILE ONLY,

ENTER:

TAPE REW

TAPE FSF 4

VMFPLC2 LOAD * *

* * * * *

* FILE FIVE CONTENTS:

vmfplc2 scan * *

SCANNING....

GRUPNOTE	FORTRAN	X1
BEAR	FORTRAN	X1

END-OF-FILE OR END-OF-TAPE

* * * * *

F I L E S I X (CADAM TRACE/REPLAY V3R1M0)

TO UNLOAD THE SIXTH FILE ONLY,

ENTER:

TAPE REW

TAPE FSF 5

VMFPLC2 LOAD * *

* * * * *

* FILE SIX CONTENTS:

vmfplc2 scan * *

SCANNING....

README	TEXT	X1
CADTRACE	EXEC	X1
SAMPLE	TRACELIB	X1
TRACE	DRAWINGS	X1
TRACE	MACLIB	X4
TRACE	SPTPARMS	X1
TRACEIM	LOADLIB	X1
TRACELM	LOADLIB	X1

END-OF-FILE OR END-OF-TAPE

* * * * *

F I L E S E V E N (TRACE/REPLAY V3R2M0)

TO UNLOAD THE SEVENTH FILE ONLY,

ENTER:

TAPE REW

TAPE FSF 6

VMFPLC2 LOAD * *

* * * * *

FILE SEVEN CONTENTS

vmfplc2 scan * *

SCANNING....

README TEXT X1

CADTRACE EXEC X1

SAMPLE TRACELIB X1

TRACE DRAWINGS X1

TRACE MACLIB X4

TRACE SPTPARMS X1

TRACEIM LOADLIB X1

TRACELM LOADLIB X1

VM1060 CONTENTS X1

END-OF-FILE OR END-OF-TAPE

SHARE PROGRAM LIBRARY SUBMITTAL FORM

University of Miami
SHARE Program Library Agency
P. O. Box 248011
Coral Gables, Florida 33124-4220
Attn: Fred Robinson

PLA CONTROL NUMBER: _____

This form should be completed and submitted with the program package to the SHARE Program Library Agency at the address shown above. Standards and instructions for submitting programs are in the SHARE Program Library Agency User's Guide and Catalog of Programs, or may be obtained from the SPLA.

- (1) Program Number (if new program, will be filled in by SPLA) _____
- (2) Title of Program GRUPNOTE (Change-a-Group-
of - Notes)
- (3) System Type(s) (Machine)
- (4) Search Keys
- (5) Programming Systems/Languages VS FORTRAN 2, IUE
- (6) Primary Subject Codes
- (7) Minimum System Requirements
- (8) New (N) or Revision (R) N
- (9) Date of Submittal
- (10) Documentation (number of pages of hardcopy submitted) 9
- (11) Author's Name and Address Johnny O. Martin, Jr.
South Carolina Electric & Gas Co.
1426 Main Street (MC 147)
Columbia, SC 29201
- (12) Name and Address of Contact for Technical ..
Inquiries (if different from Author)
- (13) Submitter's Installation Membership Code
- (14) Abstract (use reverse side of this form)

DISCLAIMER

Users should note that The University of Miami serves solely as the distribution agent for contributed programs and does not test or maintain them. They are distributed essentially in the original form submitted by the author. Neither the University of Miami nor SHARE Inc. makes any warranty, expressed or implied, as to the documentation, function, performance of the contributed programs.

SHARE PROGRAM LIBRARY SUBMITTAL FORM

The abstract should contain sufficient information for a reader to determine the value of the program. Subjects listed below may serve as a guide for information to include.

- a. Purpose of Program
- b. Programming Language Used
- c. Version and Modification level or Release Number
- d. Field of Application
- e. Type of routine (main program, subroutine, etc.)
- f. Specific description of machine requirements.

See attached sheet

An "Acknowledgement of Assistance" statement must be attached to this Submittal Form.

Conveyance of Rights:

"I hereby convey to SPLA all rights to these submitted materials, including, but not limited to, the unqualified right to reprint, reproduce, and publicly distribute this program, except that I expressly retain the rights to utilize, reprint, reproduce, and distribute the materials for my own purposes."

15) Signature of Submitter and Date

J. E. Mant Jr. 11/25/91

16) Signature of Installation Addressee (if SHARE Member)

GRUPNOTE PROGRAM

(ABSTRACT)

The GRUPNOTE Program is an interactive, IUE program. It is intended to supplement CADAM's GROUP FK and NOTE FK by allowing a scope operator to change note parameters for a "group" of existing notes in a CADAM drawing. Currently, interactive CADAM requires you to select each note individually in order to modify a note parameter.

The GRUPNOTE program uses three (3) methods to group notes:

- 1) Use CADAM's **GROUP FK** to group geometry prior to running the program. The program will automatically detect the grouped geometry and highlight the notes contained in the group.
- 2) Use the GRUPNOTE Program's **"TRAP MODE"** (similar to CADAM's /GROUP/TRAP/ function).
- 3) Use the GRUPNOTE Program's **"GROUP MODE"** to group notes by size, line weight or angle (ex. group all notes with a note size of 0.1).

After notes have been grouped, the GRUPNOTE program will allow you change the following note parameters:

- 1) Size
- 2) Character Line Width
- 3) Angle
- 4) Character Height
- 5) Character Width
- 6) Vertical Spacing
- 7) Horizontal Spacing

Also, you may delete the grouped notes, if desired.

Acknowledgment of Assistance

To the best of my knowledge, my program entitled "GRUPNOTE" is free of any proprietary, secret, or confidential information belonging to any person or organization. Where I have used the work, plans, procedures, systems, programs or names of companies or individuals, I have obtained their permission to do so.

Johnny O. Martin, Jr.

Johnny O. Martin, Jr.
(Program Author)

Nov 18, 1991

Date



South Carolina Electric & Gas Company
Columbia, SC 29218
(803) 748-3000

November 26, 1991

Lynne Fetsko
NASA Lewis Research Center
21000 Brookpark Road
Mail Stop 86-13
Cleveland OH, 44135

Enclosed are the source code and documentation for two programs, GRUPNOTE and BEAR.

If you need anymore information about these programs or have any questions, please let me know.

Sincerely,

Johnny O. Martin, Jr.
SC Electric & Gas Co.
1426 Main Street
Mail Code 147
Columbia, SC 29201
(803) 748-3751

TAP-FILE 1

GRUPNOTE Program

(Technical Notes)

The GRUPNOTE 'changes' notes by performing the following steps:

- o Determines the notes to be grouped.
- o For each note in the group, do the following:
 - a) Uses the note's model pointer to Get (U1GET) all of the parameters associated with the note and stores the parameters in an array.
 - b) Delete (U1DEL) the old note.
 - c) Update only the parameters in the array which the user requested to be changed (ex. note height).
 - d) Add (U1ADD) the new note into the dwg.

NOTES:

1. When you leave the IUE program and continue working in interactive CADAM, you may find that some of your interactive CADAM session parameters have changed (ie. Default Color Mode and/or Character Line Weight). These can be set back to the desired values by performing the following steps:

FK TYPE /COLOR/MODE/, Y/N (to turn color mode off)

or

FK TYPE /COLOR/MODE/, key color no (to change color mode)

and

FK NOTE /PARMS/LN-WT/, key char line width (to change default ln-wt)

This situation occurs because some of the parameters set within the IARRAY for U1ADD remain active when you exit your IUE program and return to interactive base CADAM. An APAR (Customer Trouble Report # G6856) has been submitted to correct the problem.

GRUPNOTE Program - Technical Notes (Continued)

2. Because the program uses arrays to store and manipulate the element pointer information and because arrays sizes must be determined prior to compiling the program, there is a limit to the number of notes that can exist in a dwg in which the GRUPNOTE program can work with. This limit is set at 1500 notes.

If desired, this limit can be increased. To do this, several arrays must be dimensioned and several conditional statements must be modified. The easiest way to do this is to use your editor to change all occurrences of the string '1500' to the 'desired limit'.

Also, array 'IERRAR' must be dimensioned to twice the note limit (it is currently dimensioned as '3000'). It must be changed to twice the size of the 'desired limit' (if you set the new note limit to 2000, IERRAR must be dimensioned as 4000).

All of these changes must be performed in the main program as well as all subroutines.

GRUPNOTE Program

(Change-a-Group-of-Notes)

Version 1.00

November 20, 1991

**Program Developed
by
South Carolina Electric & Gas Company**

Table of Contents

	<u>Page</u>
Disclaimer	3
Abstract	4
User Instructions	5
Technical Notes	8

**DISCLAIMER OF WARRANTY
LIMITATION OF LIABILITY**

SOUTH CAROLINA ELECTRIC & GAS COMPANY (SCE&G) DISCLAIMS ALL WARRANTIES EXPRESSED OR IMPLIED, INCLUDING, BUT NOT LIMITED TO ANY IMPLIED WARRANTY OF MERCHANTABILITY OR FITNESS FOR A PARTICULAR PURPOSE AS TO THE DOCUMENTATION, FUNCTION, OR PERFORMANCE OF THIS PROGRAM. THIS SOFTWARE PROGRAM IS PROVIDED "AS IS". THE ENTIRE RISK AS TO THE RESULTS AND PERFORMANCE OF THE PROGRAM IS ASSUMED BY YOU. SCE&G DOES NOT WARRANT, GUARANTEE, OR MAKE ANY REPRESENTATIONS REGARDING THE USE OF, OR THE RESULTS OBTAINED WITH THE PROGRAM IN TERMS OF CORRECTNESS AND RELIABILITY OR LEGALITY. IN NO EVENT SHALL SCE&G BE LIABLE FOR ANY LOSS OF PROFIT OR ANY OTHER COMMERCIAL DAMAGE INCLUDING BUT NOT LIMITED TO SPECIAL, INCIDENTAL, CONSEQUENTIAL OR OTHER DAMAGES.

UNDER ANY CIRCUMSTANCE AND WITHOUT ALTERATION OF THE EFFECT OF THE ABOVE PARAGRAPH, SCE&G'S LIABILITY FOR DAMAGES, FOR ANY CAUSE WHATSOEVER AND REGARDLESS OF FORM OF ACTION, SHALL NOT EXCEED THE FEES ACTUALLY PAID FOR THE SOFTWARE.

GRUPNOTE PROGRAM

(ABSTRACT)

The GRUPNOTE Program is an interactive, IUE program. It is intended to supplement CADAM's GROUP FK and NOTE FK by allowing a scope operator to change note parameters for a "group" of existing notes in a CADAM drawing. Currently, interactive CADAM requires you to select each note individually in order to modify a note parameter.

The GRUPNOTE program uses three (3) methods to group notes:

- 1) Use CADAM's **GROUP FK** to group geometry prior to running the program. The program will automatically detect the grouped geometry and highlight the notes contained in the group.
- 2) Use the GRUPNOTE Program's **"TRAP MODE"** (similar to CADAM's /GROUP/TRAP/ function).
- 3) Use the GRUPNOTE Program's **"GROUP MODE"** to group notes by size, line weight or angle (ex. group all notes with a note size of 0.1).

After notes have been grouped, the GRUPNOTE program will allow you change the following note parameters:

- 1) Size
- 2) Character Line Width
- 3) Angle
- 4) Character Height
- 5) Character Width
- 6) Vertical Spacing
- 7) Horizontal Spacing

Also, you may delete the grouped notes, if desired.

GRUPNOTE Program

(User Instructions)

The GRUPNOTE Program will allow you to "group" existing notes in a CADAM drawing, and change the note parameters associated with the grouped notes.

Running The Program

Call up the drawing and change to the view/detail page containing the notes to be changed:

- o Press the ACCESS Key
- o Select /EXECUTE IUE PGM/
- o Select **GRUPNOTE**
- o Press the Y/N Key

The program's two main functions are "Grouping" Notes and "Changing" Notes.

Grouping Notes

The user has three (3) methods available for grouping notes:

- 1) Use CADAM's **GROUP FK** to group geometry prior to running the program. The program will automatically detect the grouped geometry and highlight the notes contained in the group.
- 2) Use the GRUPNOTE Program's "**TRAP MODE**" (similar to CADAM's /GROUP/TRAP/ function).
- 3) Use the GRUPNOTE Program's "**GROUP MODE**" to group notes by size, line weight or angle (ex. group all notes with a note size of 0.1).

Changing Notes

Once you have grouped all notes that are to be changed and selected /ACCEPT/, you are in "**CHANGE MODE**". This allows you to change parameters of the grouped notes, either **Size**, **Character Line Width**, **Angle** or **Other**. Also, you can choose to **Erase** the grouped notes.

'Other' is only used when it is desirable to change the Note parameters independently of each other. For example, changing only the **Character Width**, while **Character Height**, **Vertical Spacing** and **Horizontal Spacing** remain the same. '.

'Size', on the other hand, will automatically change all parameters associated with **Character Height** (**Character Width**, **Vertical Spacing** and **Horizontal Spacing**).

Changes to 'Other' must be made AFTER changing 'Size', 'Char Line Width' and 'Angle'.

GRUPNOTE Program - User Instructions (Continued)

NOTE:

If the notes in your drawing contain color or line weight, some of the default parameters of your interactive Base CADAM session might be changed while running this IUE program. The two parameters known to be affected are FK TYPE/COLOR/MODE and FK NOTE/PARMS/LN-WT. The 'default color mode' and 'default character line weight' can be set back to the desired values, if needed, by performing the following steps.

To Turn Default Color Mode Off:

FK TYPE /COLOR/MODE/, Y/N

To Change Default Color Mode:

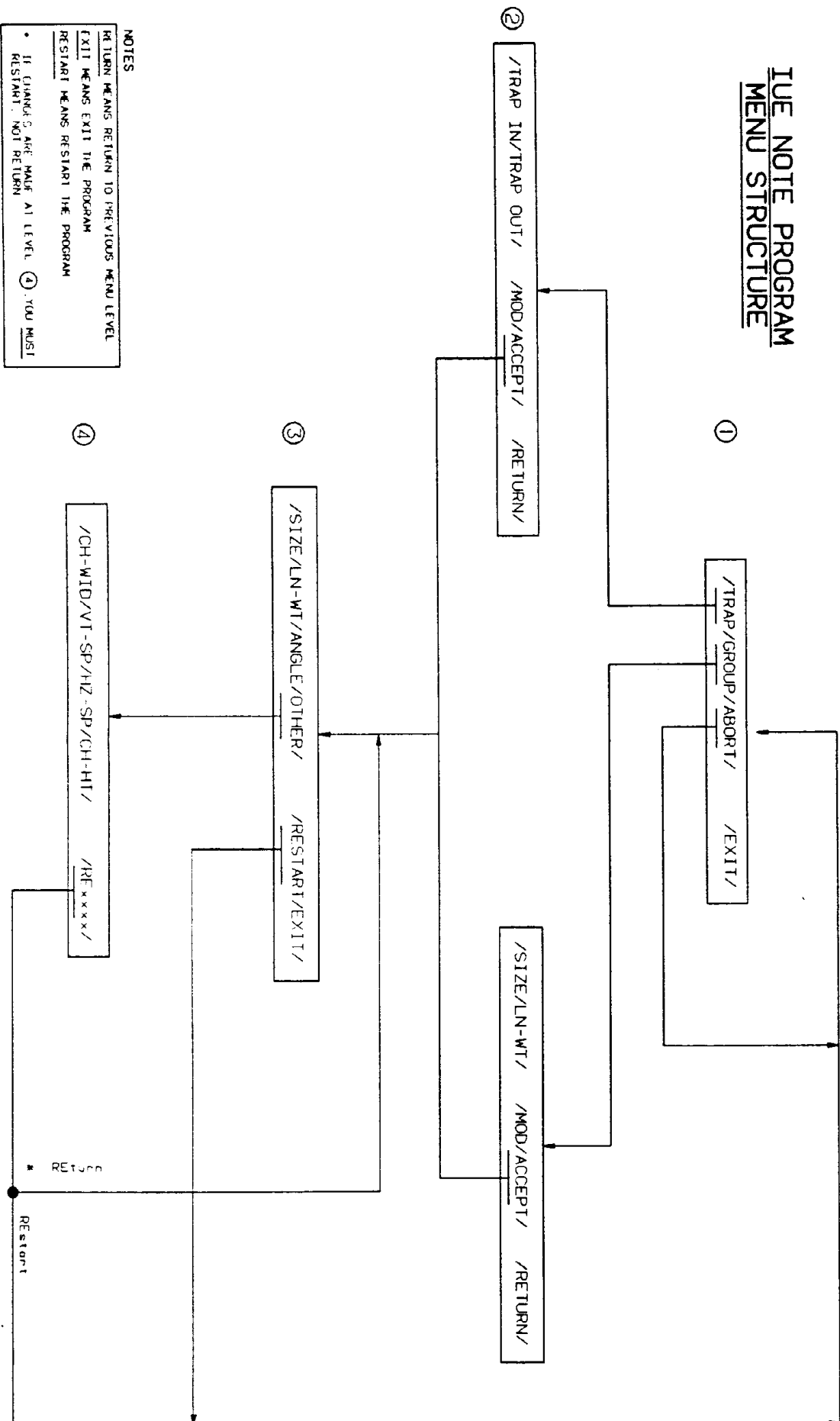
FK TYPE /COLOR/MODE/, key color no

To Change Default Character Line Weight:

FK NOTE /PARMS/LN-WT/, key char line width

This must be done because when notes are added through IUE, as is the case with the GRUPNOTE program, some of the IUE note parameters become the 'default' for the Base CADAM interactive scope session. This problem has been APARed with CADAM INC (see attached 'technical notes').

NOTE PROGRAM



Tape files 2 & 3

CADRESTV (exec)

- a. Restores a group from tape without needing the subgroups entered
- b. VM/REXX
- c. Version & Modification level or Release Number: N/A
- d. Restores models from tape (usually a full backup) to specified CADAM group.
- e. Main program
- f. VM/SP, HPO 4+, CADAM 20.1.1+

CADUNA

- a. This exec builds an input file for use by CREATEMP exec of all user entries in the specified group.
- b. VM/REXX
- c. Version and modification level or release number: N/A
- d. Simplifies data base maint.- allows easy re-entry of users when rebuilding files.
- e. Main program
- f. Known to run with VM/SP, HPO 4 and + (not tested on XA) and

RXIUE (REXX- IUE interface)

- a. This interface is for CADAM 21+ and above running under VM/SP (of HPO) release 4 and above in "non-XA mode". This is an IUE application using IUCV to communicate with REXX programs.
- b. Assembler language
- c. RXIUE is currently version 3.1.1b
- d. Presently supports: Extract of groups, subgroups, model ids, model text, model info field: allows text, info field to be updated, models can be moved, copied, deleted. A priv table is used.
- e. Self loading nucleus extension
- f. VM/SP, HPO 4 and above (not XA), CADAM 21 and above.

11/12/91
15:11

Options specified: NOT DISK

The input tape is on a 3420-8 9-track tape drive at address 0181.
The tape was recorded at 6250 bpi and is in unlabeled format.

No volume name can be determined.

**** File 1.
This file is apparently in VMFPLC2 (4K) format.

FileName	FileType	FM	Format	LRecL	Records	Date	Time
CHKDRWID	EXEC	C1	V	72	120	04/30/91	13:48:20
DRAWMOVE	EXEC	C1	V	72	9	09/27/90	8:00:30
DRAWMOVE	XEDIT	C2	V	73	728	05/23/91	9:43:41
DRWARCH	EXEC	C1	V	72	83	05/21/91	10:38:52
DRWBUILD	EXEC	C1	V	73	71	05/21/91	10:33:48
DRWOREV	EXEC	C1	V	82	84	05/21/91	10:39:34
GETDRAW	EXEC	C1	V	72	36	08/14/90	15:33:24
IUEGEN	EXEC	C1	V	72	14	08/14/90	15:16:22
IUEKDC2	ASSEMBLE	C1	F	80	1999	05/09/91	8:12:09
IUEKDC2	AUXSP	C1	F	80	1	11/05/91	10:46:26
IUEKDC2	CPCPARMS	C1	F	80	6	03/05/91	9:12:34
IUEKDC2	EXEC	C1	F	130	33	08/14/90	15:26:43
IUEKDC2	LINK	C1	F	80	3	05/22/91	14:22:42
IUEKDC2	LOGFILE	C1	F	160	1	05/29/91	15:31:02
IUEKDC2	PRIVTABL	C1	F	80	27	08/13/91	8:27:44
RXIUE	ASSEMBLE	C1	F	80	1394	05/09/91	7:10:34
RXIUE	AUXSP	C1	F	80	3	06/19/91	9:04:06
RXIUE	DOC	C1	V	73	270	05/24/91	10:14:00
RXIUE	DOCTALK	C1	V	85	591	11/12/91	14:25:34
RXIUE	IUECON01	C1	F	80	90	05/24/91	12:03:47
RXIUE	IUELPSW	C1	F	80	4	06/19/91	9:05:08
RXIUEGEN	EXEC	C1	V	72	14	08/14/90	15:13:43

End of file 1 encountered after reading 134 blocks
containing 385K bytes. About 11 feet of tape was used.
The largest block was 4,005 bytes, the last block was
1,605 bytes, and the smallest block was 77 bytes.

**** File 2.
This file is apparently in VMFPLC2 (4K) format.

FileName	FileType	FM	Format	LRecL	Records	Date	Time
CADRESTV	EXEC	C1	V	73	155	04/24/91	12:48:00
CADUNA	EXEC	C1	V	71	120	04/24/91	10:10:47

End of file 2 encountered after reading 8 blocks
containing 17K bytes. About 1 foot of tape was used.
The largest block was 4,005 bytes, the last block was
805 bytes, and the smallest block was 77 bytes.

**** File 3.
End of file 3 encountered after reading 0 blocks
containing under 1K bytes. About 1 foot of tape was used.

SHARE PROGRAM LIBRARY SUBMITTAL FORM

University of Miami
SHARE Program Library Agency
P. O. Box 248011
Coral Gables, Florida 33124-4220
Attn: Fred Robinson

LA CONTROL NUMBER: _____

This form should be completed and submitted with the program package to the SHARE Program Library Agency at the address shown above. Standards and instructions for submitting programs are in the SHARE Program Library Agency User's Guide and Catalog Programs, or may be obtained from the SPLA.

- 1) Program Number (if new program, will be filled in by SPLA) _____
- 2) Title of Program CADRESTV (EXEC)
- 3) System Type(s) (Machine) V.M./SP, HPD 4F (XA ?), CADAM 2D, 11 +
- 4) Search Keys _____
- 5) Programming Systems/Languages V.M./REXX
- 6) Primary Subject Codes _____
- 7) Minimum System Requirements _____
- 8) New (N) or Revision (R) New
- 9) Date of Submittal 18/NOV/91
- 10) Documentation (number of pages of hardcopy submitted) 8
- 1) Author's Name and Address Ken Chamberlain
..... Prestolite Electric
..... Four Seagate
..... Toledo, OH 43691
- 2) Name and Address of Contact for Technical ..
Inquiries (if different from Author)
.....
.....
- 3) Submitter's Installation Membership Code _____
- 4) Abstract (use reverse side of this form)

DISCLAIMER

Users should note that The University of Miami serves solely as the distribution agent for contributed programs and does not test or maintain them. They are distributed essentially in the original form submitted by the author. Neither the University of Miami nor SHARE Inc. makes any warranty, expressed or implied, as to the documentation, function, performance of the contributed programs.

SHARE PROGRAM LIBRARY SUBMITTAL FORM

The abstract should contain sufficient information for a reader to determine the value of the program. Subjects listed below may serve as a guide for information to include.

- a. Purpose of Program
- b. Programming Language Used
- c. Version and Modification level or Release Number
- d. Field of Application
- e. Type of routine (main program, subroutine, etc.)
- f. Specific description of machine requirements.

- a) Restores a group ^{from tape} without needing the subgroups entered.
- b) VM/Rexx
- c) N/A
- d) Restores models from tape (usually a full backup) to specified CADAM group
- e) main
- f) VM/SR, HPO 4+, CADAM 3011.1+

An "Acknowledgement of Assistance" statement must be attached to this Submittal Form.

Conveyance of Rights:

"I hereby convey to SPLA all rights to these submitted materials, including, but not limited to, the unqualified right to reprint, reproduce, and publicly distribute this program, except that I expressly retain the rights to utilize, reprint, reproduce, and distribute the materials for my own purposes."

- 15) Signature of Submitter and Date Randall A Cantley 12/Nov/91
- 16) Signature of Installation Addressee (if SHARE Member) _____

To the best of my knowledge, my program entitled "VM/Rexx-CADAM IUE Interface" is free of any proprietary, secret, or confidential information belonging to any person or organization. I have not used the work, plans, procedures, systems, programs or names of any companies or individuals.

Additionally, this program is submitted with the full knowledge and consent of the author.

Rondal R Cantley 18/Nov/91

TAPE FINES
243

CCCCCCC	AAA	DDDDDD	RRRRRRR	EEEEEEEE	XX	XX	XX	XX
CCCCCCC	AA AA	DDDDDD	RRRRRRR	EEEEEEEE	XX	XX	XX	XX
CC	AA AA	DD DD	RR RR	EE	XX XX		XX XX	
CC	AAAAAAA	DD DD	RRRRRRR	EEEEEE	XXX		XXX	
CC	AAAAAAA	DD DD	RRRRRRR	EEEEEE	XXX		XXX	
CC	AA AA	DD DD	RR RR	EE	XX XX		XX XX	
CCCCCCC	AA AA	DDDDDD	RR RR	EEEEEEEE	XX	XX	XX	XX
CCCCCCC	AA AA	DDDDDD	RR RR	EEEEEEEE	XX	XX	XX	XX

VM/Rexx interface to Cadam Inc.'s Cadam System

Ken Chamberlain - Prestolite Electric Inc.

This interface was written for Cadam Rel 21+ and above running under VM/SP (or HPO) Release 4 and above in a Non-XA mode. Two programs are used: Iuekdc2 and Rxieue. Written by Kenneth D. Chamberlain. No Warranty is Implied or Expressed. I assume no responsibility for any problems/damages the programs may cause directly or indirectly.

Iuekdc2 is an IUE application using IUCV to communicate with each Rexx program using Rxieue. The Vm Userid running Iuekdc2 MUST be in the request ids for each database you want to communicate with, must have the Cadam source disk accessed for the necessary loadlibs to execute, A 8-10 meg virtual machine should be big enough to run Iuekdc2. The VM userid must have 'IUCV ANY', 'IUCV ALLOW' and an 'OPTION MAXCONN 255' in the directory definition of this Userid. The default Vm Userid as defined in Rxieue program is 'CADREXX'.

I run a 'cad2' exec in 'Iuekdc2 exec' which is a modified 'cad exec' which removes the global to 'acctlm loadlib'.

If you want to use the acctlm loadlib for Iuekdc2 you will have to define a password file for Iuekdc2 to read (actually Cadam accesses it I don't) for Iuekdc2's authority to the Data Bases.

The Server machine needs access to 8 Cms files (other than normal Cadam files on the Cadam Source disk).

1. 'Group Owner' - normally read from the Cadam source disk.
File 'Group Owner' defines each Group name and it's DBM.
You may wish to copy this to the Server's 'A' disk. You must remove any DBM's that do not have the server in their Request Ids.
If Iuekdc2 tries to read a group for which it is not authorized, Cadam will blow up Iuekdc2 and give the below mesg. I have Apar'ed this.
'CADO107E(READYX--): ILLEGAL GROUP NAME IN COMMON'
2. 'Iuekdc2 Cpcparms' - normally on Iuekdc2's 'A' disk.
File 'Iuekdc2 Cpcparms' is required by Cadam to run an IUE program.
3. 'Iuekdc2 Privtabl' - normally on Iuekdc2's 'A' disk.
4. 'Iuekdc2 Exec' - Executes the Iue program Iuekdc2.
5. 'Iuekdc2 Logfile' - History of Updates to a Database. If you did not install the default one, it will be created when 1st update occurs.
6. 'Accessim Loadlib' - Where the Iuekdc2 program is at.
7. 'Profile exec' - To auto start Iuekdc2 if Server is Autologged.
8. 'Iuekdc2 Link' - normally on Iuekdc2's 'A' disk. Used by
'Acclnki Exec' to link Iuekdc2 into the 'Accessim Loadlib'

File 'Iuekdc2 Privtabl' is read by Iuekdc2 to extract who has authorization for access to Iuekdc2 (via Rexx) and what privileges the user has (move,delete,copy, etc...) if any (other than query). If multi-defines for a user the DEFAULT one must be the last one(s) for that Userid. Also, Userid 'Everybody', if defined (the choice is yours) gives ALL userid's a default access to Iuekdc2 via Rxixue. You might use this to allow everybody to access the query functions instead of putting an '* *' define for each user as a default. 'Everybody' defines MUST be the last entries in the privtabl.

'iuekdc2 privtabl'.

* Iuekdc2 Privilege Table

```

*          M-move a drawing. ( Movedraw
*          |C-copy a drawing. ( Copydraw
*          ||D-delete a drawing. ( Deldraw
*          |||G-Get the 72-text area ( Gettext
*          ||||P-put the 72-text area ( Settext
*          |||||U-update text in a drawing. ( Modtext
*          |||||T-read text in a drawing. ( Getattr
*VMUSER   GRP.  S-GRP.  |||||
CADGEN    *    *      ***** *   Night time do it all userid for Cadam.
CADKDC    *    *      *****   Cadam maint userid.
CADKDC2   *    *      *****   Cadam test maint userid (CPR tester
CADMAN    *    *      ***** *   Build cross reference userid
CADPLOT   *    *      ***** *   Oracle OBS mover and plotter
CHAMBER   *    *      *****   Kdc's regular user
ROGERS    OBS  OBS300 ** ** *   Mike's Obsolete Group Sub-Group Area
ROGERS    DEC  *      ** ** *   Mike's access to Decatur Work Group
ROGERS    RELA *      ** ** *   " " " " " " Release Group
ROGERS    RELB *      ** ** *   " " " " " " " "
ROGERS    RELC *      ** ** *   " " " " " " " "
ROGERS    RELD *      ** ** *   " " " " " " " "
ROGERS    *    *      This must follow the other Rogers' Privs.
*          I could delete it and use 'EVERYBOD' Default
JALLEN    DEC  *      **      Jim can look, move, copy but nothing else
JALLEN    RELA DREL99 **      Same goes here
SNARE     *    *      *****   Engineering's Drafting Supervisor.
EVERYBOD  *    *      EVERYBODY'S PRIV AND MUST BE *LAST*

```

Any updates to the database (move a drawing,copy a drawing,delete a drawing, update the text area) are LOGGED in file 'Iuekdc2 Logfile'.

Userid	Date	Time	Function	Grp	S-Grp	Drawing Id	NGrp	NS-
CHAMBER	02/27/91	09:08:15	COPYDRAW	APD	DFTJAS	BOWLING SHEET	ENG	TOL
CADPLOT	03/02/91	04:01:26	MOVEDRAW	REL	FL0001	SRP-2511	81	OBS OBS

The filedef to Iuemsg MUST NOT BE TO THE 'A' DISK. 'Iuekdc2 Exec' defines it to the printer. This is due to disk directory updates are performed only after all output files are closed and since Iuemsg file is always open, all updates to the 'A' disk (I.E. Iuekdc2 Logfile) are never written to the disk till End-Of-Job (and Iuekdc2 NEVER EOJ's).

Rxiue is the REXX interface you use to 'talk' to the Iue/Iucv Server. Label 'Server' in the source code identifies the VM Userid of where Iuekdc2 is running. The default Userid is 'CADREXX'.

To generate Rxiue at your site:
Enter 'Rxiuegen' to assemble Rxiue assemble and generate the Rxiue nucleus extension module for you.

Note: Any parms that have a length of 0 then it will be treated as the end-of-parms and no other parms beyond it will be processed. I.E. sgroup='';a = rxiue('gettext','eng',sgroup,'testpart')
Sgroup's len=0 so 'testpart' will not be passed to Iuekdc2 and this call will fail.

Rxiue Commands:

rxie

- Displays Version Number

rxie noterm

- Suppress display of Rxieumsg on console. Sometimes you don't want the 'free' display on the console if an error occurs.

rxie term

- This is the 'Default'. Display Rxieumsg on console IF return code from rxie is not 0. Rxieumsg is always set if a non 0 return for your exec to process it.

rxie end (3.1.1a Update)

- Sever the connection to the server. Normally this is not required since Rxie is an end-of-command routine it will sever the connect at the R; prompt. This command is included in case you have some use for it.

a = rxie('getgrps')

- Places all group names in Rexx variables Cadgrp.x
- Cadgrp.0 = count of groups.

a = rxie('getsgrps','eng')

- Places all sub-group names in Rexx variables Cadsgrp.x
- Cadsgrp.0 = count of sub-groups

a = rxie('getdrws','eng','tolxxx')

- Places all drawing ids in Rexx variables Drwid.x
- Drwid.0 = count of drawing ids.

a = rxie('gettext','eng','tolxxx',drwid)

- Places the 72 byte text string in Rexx variable Cadtext
- col 68-72 contains Julian last-filed date.
- col 64-67 contains 24-hour time when drawing was filed IF .. Cadgrptb had 'FILETIME' option for that group.

a = rxie('settext','eng','tolxxx',drwid)

- Updates the 1st 67 characters of the text field in the drawing id requested using Rexx variable Cadtext.
- I will set the time in col:64-67 for you in case you don't have 'FILETIME' in the cadgrptb. Also, I will insert your Userid in col:51-58. If you don't like these 'free' updates to the text area you can always '*' that part of the code.

drwid='IBM-2040LA'

a = rxie('movedraw','eng','tolxxx',drwid,'eng','toljas',drwid)

- Moves a drawing from the grp1,sgrp1,drwid1 to grp2,sgrp2,drwid2
- Note: you could rename the drawing also with this by changing the 2nd group drawing id. - Movedraw WILL NOT OVERFILE, if you get a dup drawing id it's up to you to take corrective action.

```

a = rxieue('copydraw','eng','tolxxx',drwid,'eng','toljas',drwid)
  - Copy a drawing from group1 to group2, Same as 'movedraw'
  - except the original drawing is NOT erased.

a = rxieue('deldraw','eng','tolxxx',drwid)
  - Deletes a drawing.

```

Getattr will return any/all text strings associated with an element.
 (which may be located on the DRAWING Page or the DETAIL Page)
 (and/or may be NO-SHO elements on either Page)

```

attr=202;itype='1520' /* 202=local attribute, 1520=Balloon Itype */
a = rxieue('getattr','eng','tolxxx',drwid,attr)
  - returns each text string associated with the attribute
  - requested - for Itype 1400 (Text Element) only.
  - Values are returned into Rexx variable Cadattr.x.
  - Cadattr.0 = number of string(s) found.
  - NOTE: If the type of character set is 'Extended' the value(s)
  - returned will be 'extended' (2 bytes per character to account
  - for the special characters in the string. I.E. if the string has
  - 'ABxC' (x being a 2 byte special character on the scope) the
  - the value returned will be x'00C100C2xxxx00C3'.
  - The X and Y coordinates (w/ 6 decimal positions) for each
  - string are returned into Rexx variable Cadatxy.x with the
  - X value in word one and the Y value in word two respectively.
  - The Model Pointer of this element is returned into Rexx variable
  - Cadmptr.x and is 8 bytes long.
  - The Itype of this element is returned into Rexx variable
  - Cadityp.x and is 5 bytes long. (I.E. text = 01400
  - If no hit Cadattr.0 is set to 0.
  - If only 5 parms are passed then Itype of 1400 is assumed.

a = rxieue('getattr','eng','tolxxx',drwid,attr,itype)
  - similar to above but the 6th parm may be used to specify
  - an Itype other than the default Itype of Text-(1400)

a = rxieue('getattr','eng','tolxxx',drwid,'*',itype)
  - Here we ask for any text with a specified Itype without
  - using an Attribute as part of the search.

a = rxieue('getattr','eng','tolxxx',drwid,attr,'*')
  - Here we ask for any text with a specified Attribute without
  - using an Itype as part of the search.

```

Modtext is the opposite of Getattr. Modtext will update (not create) a text string on a Cadam drawing. Getattr must be run first to get the string along with the Itype and Model-pointer of the string.

cadityp='01400' or cadityp = cadityp.2 (if updating 2nd variable)
cadityp length must be 5 character. (from a 'getattr' function.

cadmptr='00000F3E' or cadmptr = cadmptr.2 (if updating 2nd variable)
cadmptr length must be 8 characters. (from a 'getattr' function.

cadattr='My New Update String' (max length I support is 256 bytes)
cadattr is Case-Sensitive. The above Mixed-case will be entered
onto the drawing as Mixed-case.

```
a = rxive('modtext','eng','tolxxx',drwid)
```

- Here we are updating a text string belong to an element on
- this drawing. Cadityp, Cadmptr, and Cadattr are required
- Rexx variables for me to pull the information I need to
- do the update. Due to the fact that an update can alter the
- Model Pointer, after the update the 'New' Model Pointer for
- update will set in Rexx variable 'cadmptr' for you in case you
- need to update this variable before doing another 'getattr'.
- Please note that only certain Itypes can be modified as noted
- in the Iue Programmers Guide under U1EDIT calls. As of this
- writing the Itypes supported are: 01100 User Attribute,
- 01308 Spline Dimension, 01400 Text element, 01500 2D Arrow,
- 01520 Balloon, 01530 Textline, 01540 Annotation Line
- 01550 Annotation Arc, 06210 EC Symbol, 31400 3D Annotation
- Cadam Ver 3 Rel 1 Mod 1 added the following supported Itypes:
- 1300 Horizontal Dimension, 1301 Vertical Dimension,
- 1302 Parallel Dimension, 1303 Normal Dimension,
- 1304 Angle Dimension, 1305 Radius Dimension,
- 1306 Diameter Dimension, 1307 Circular Arc Dimension,
- 1308 Spline Dimension, 1309 Horizontal Datum Line,
- 1310 Vertical Datum Line, 1311 Chamfer Dimension
- At this time I do not support the 06210 EC Symbol.
- BTW: a return code of 3 normally means cadmptr value is invalid.

Rxiue Return codes:

A is the return code from the function called.

0 = Function completed with no errors.

Any errors below 35 are the standard Cadam IUE errors.

I.E. 10 - duplicate drawing id (if a move/copy would overlay an existing drawing).

Above code 34 is an error generated by Rxiue and/or Iuekdc2 that needs your attention.

090 - Unknown Iue Error (Iue error was > 34)

092 - Getattr Error (I.E. Invalid or Non-numeric or Missing Itype/Attr.

093 - Invalid Group/Sub-Group

094 - Not Authorized for DelDraw (Delete)

095 - Not Authorized for Copydraw

096 - Not Authorized for Movedraw

097 - Not Authorized for Gettext/Puttext

098 - Not Authorized for that Group/Sub-Group

099 - Invalid Function, and other Bad things.

255 - Iucv Error

Rexx variable 'Rxiuemsg' will contain the text of the error message if the return code is not 0 and it will also be display on the terminal unless a 'rxiue noterm' is run. The 'rxiue term' will set the display back on.

A = 255 is an Iucv error, the text of the error will be displayed and Rxiue will abort.

Examples included with the source code:

- Drawmove exec/xedit : Move/Copy/Delete/Display text by Attribute or Itype/Display 72-Byte Text area. Full Screen xedit using Rexx to display Group, Sub-Group, and Drawing Id's. Eliminates the need to use a Scope (5080 or whatever) to perform drawing management.
- Chkdrwid exec : Compares attribute 201 at PEI (Drawing Id on the drawing with what it is filed under. It's runs against all of our Release groups.
- Drwbuild exec : Extracts all Drawing Id's and builds a cms file with group, sub-group, drawing id.
- Drwarch exec : Search our Archive area for drawings with multiple version levels. If found moves the older version(s) drawing to an unload user for a later tape backup that will be run.
- Drworev exec : Moves any drawing the in Archive area that is over 90 days old to the unload user for a later tape backup. File Date is extracted using 'gettext' for each drawing and compared to current run date. This exec requires 'EDATE EXEC' found on many Vm Tools Tapes.

Future Enhancements:

Allow semi-permanent connections to avoid multi-connects by either making RxIue an 'End of Command' routine and break the connection at R; or allow user to break connection by a 'RxIue End' command. Calls will run a lot faster though since I don't have reconnect (Iucv Connect) many times when running an exec using RxIue.

The above has been tested at Pei for stability the past 2 weeks will no problems. The updates to RxIue is included on the tools tape. 'RxIue Iuecon01'. So far the testing has gone very well.

Also being tested is having Iuekdc2 remember via the iucv connection what the last Ulopen call was, and if called again by the same user then skip the call, sense it's already open. This really increases the memory requirement for Iuekdc2 if a Ulopen is called since I have to maintain a separate Model Space Reference Number for each user connected to me. NOTE: CADAM only allows four(4) Model Spaces to be opened at one time per program. IF a 5th Model Space is called for you get a RC=3 Invalid Calling Parameter. This is a Cadam restriction and they probably won't change it.

Allow 'Open' 'Update (U1Add,etc..)' 'File' commands to update a drawing w/o a forced file after each function, but the above restriction (MODNO < 5) puts a damper on it. The routine will probably be added anyway as my time permits but users will have to be aware of a possible RC=3 when trying to update a drawing. Updating would allow us to use U1ADD to create elements (I.E. 2D Cubic Parametric Splines, 2D Circles, etc...), do a modtext, maybe add some text, THEN file the drawing.

Rxiue-Cadam Drawing File Mover

V2.2

Select "From Group" below and Press Enter

_ APD	_ ARC	_ ARCH	_ CAD	_ CLE	_ DEC	_ ENG
_ GAI	_ OBS	_ REL	_ RELA	_ RELB	_ RELC	_ RELD
_ RELF	_ RELG	_ RELJ	_ RELK	_ RELN	_ RELP	_ RELR
_ RELS	_ RELU	_ RELX	_ SYSD	_ WAG		

Rxiue-Cadam Drawing File Mover

V2.2

Select "From Sub-Group" below and Press Enter

Group: ENG

_ CBDS	_ CLEAN	_ CURVES	_ DATASH	_ DECCHK	_ DEMO	_ DFTCHK
_ DFTMNR	_ EGFORM	_ ENGARC	_ FMEA	_ GAICLK	_ M70DBH	_ ORACLE
_ QCHART	_ SALRJC	_ START	_ STARTM	_ TOLAHF	_ TOLAV	_ TOLJAK
_ TOLJDP	_ TOLKDC	_ TOLMFG	_ TOLMSC	_ TOLRDH	_ TOLSLN	_ TRAIN
_ WAGCHK						

Rxiue-Cadam Drawing File Mover

V2.2

Cmds: 'M'ove/'C'opy/'D'elete/'A'ttr/'T'ext-72/'I'type

98 Dwgs in ENG TOLJDP

_ EO-CATEPILLAC	100	_ EX-210836	C1	_ GRAPH DET D	
_ EO-29285A	C1A	_ EX-210839	C1	_ HB-WORLDCCLASS	C1
_ EO-29285A	C1G	_ EX-210840	C1	_ HB_P092-15	D1L
_ EO-29285A	C1O	_ EX-210841	B1	_ HB_P092-23	D1L
_ EO-29383A	C1A	_ EX-210881	C1	_ JAN.SCHEDFE10	
_ EO-29383A	C1O	_ EX-210882	D1	_ JDPT-MODIFIED	D1L/
_ EO-29414	B1	_ EX-210887	B1	_ JDPT-MODITRIM	D1L/
_ EO-29442	C1A	_ EX-210888	B1	_ JDP2-MODIFIED	D1L/
_ EO-29442	D1O	c ARCSCHEDII		_ LAV-LO	
_ EX-CASSY	B1	c ARCSCHEDUL		_ MTR-CONTROL	D1
_ EX-210174	C1	_ BDX-SHIELD	B1	_ MTR-CONTROL2	D1
_ EX-210268	B1	_ BDX-SPACER	B1	_ MTR-CONTROL3	C1A
_ EX-210330	D1	_ CADTALK		_ NEWT-DETAI725	D1L/
_ EX-210330V2	D1	_ CARD		_ NEWT-MODIT725	D1L/
_ EX-210530	C1	_ CAT1	D 1LL	_ NEW2-MODIT725	D1L/
_ EX-210533	B1	_ CLARKSCHED		_ OUTL-MODIT725	D1L/
_ EX-210533V2	B1	_ CONTACTOR	D1G	_ PRESENTOR	D1G

Rxiue-Cadam Drawing File Mover

V2.2

Select "To Group" below and Press Enter

<input type="checkbox"/> APD	<input type="checkbox"/> ARC	<input type="checkbox"/> ARCH	<input type="checkbox"/> CAD	<input type="checkbox"/> CLE	<input type="checkbox"/> DEC	<input type="checkbox"/> ENG
<input type="checkbox"/> GAI	<input type="checkbox"/> OBS	<input type="checkbox"/> REL	<input type="checkbox"/> RELA	<input type="checkbox"/> RELB	<input type="checkbox"/> RELC	<input type="checkbox"/> RELD
<input type="checkbox"/> RELF	<input type="checkbox"/> RELG	<input type="checkbox"/> RELJ	<input type="checkbox"/> RELK	<input type="checkbox"/> RELN	<input type="checkbox"/> RELP	<input type="checkbox"/> RELR
<input type="checkbox"/> RELS	<input type="checkbox"/> RELU	<input type="checkbox"/> RELX	<input type="checkbox"/> SYSD	<input type="checkbox"/> WAG		

Rxiue-Cadam Drawing File Mover

V2.2

Select "To Sub-Group" below and Press Enter

Group: ENG

<input type="checkbox"/> CBDS	<input type="checkbox"/> CLEAN	<input type="checkbox"/> CURVES	<input type="checkbox"/> DATASH	<input type="checkbox"/> DECCHK	<input type="checkbox"/> DEMO	<input type="checkbox"/> DFTCHK
<input type="checkbox"/> DFTMNR	<input type="checkbox"/> EGFORM	<input type="checkbox"/> ENGARC	<input type="checkbox"/> FMEA	<input type="checkbox"/> GAICLK	<input type="checkbox"/> M70DBH	<input type="checkbox"/> ORACLE
<input type="checkbox"/> QCHART	<input type="checkbox"/> SALRJC	<input type="checkbox"/> START	<input type="checkbox"/> STARTM	<input type="checkbox"/> TOLAHF	<input type="checkbox"/> TOLAV	<input type="checkbox"/> TOLJAK
<input type="checkbox"/> TOLJDP	<input type="checkbox"/> TOLKDC	<input type="checkbox"/> TOLMFG	<input type="checkbox"/> TOLMSC	<input type="checkbox"/> TOLRDH	<input type="checkbox"/> TOLSLN	<input type="checkbox"/> TRAIN
<input type="checkbox"/> WAGCHK						

You have selected the following Drawings to be copied

From Group= ENG , Sub-Group= TOLJDP

To Group= ENG , Sub-Group= TOLKDC

Drawid= ARCSCHEDII

Drawid= ARCSCHEDUL

Enter "Y" to confirm the copy.

y

Beginning Copy.... Please wait.

ARCSCHEDII **Failed**

** 095 You are not Authorized to Copy to that area. **

ARCSCHEDUL **Failed**

** 095 You are not Authorized to Copy to that area. **

Press Enter to continue....

SHARE PROGRAM LIBRARY SUBMITTAL FORM

The abstract should contain sufficient information for a reader to determine the value of the program. Subjects listed below may serve as a guide for information to include.

- a. Purpose of Program
- b. Programming Language Used
- c. Version and Modification level or Release Number
- d. Field of Application
- e. Type of routine (main program, subroutine, etc.)
- f. Specific description of machine requirements.

a) This exec builds an input file for use by CREATEMP
exec of all user entries in the specified group

b) VM/2EXX

c) N/A

d) Simplifies data base maint - allows easy re-entry of
users when rebuilding files

e) "Main"

f) Known to run with VM/SP HPO 4 and above (not tested on XA)
CAMAM 20.1.1 and above

An "Acknowledgement of Assistance" statement must be attached to this Submittal Form.

Conveyance of Rights:

"I hereby convey to SPLA all rights to these submitted materials, including, but not limited to, the unqualified right to reprint, reproduce, and publicly distribute this program, except that I expressly retain the rights to utilize, reprint, reproduce, and distribute the materials for my own purposes."

15) Signature of Submitter and Date

Kandell & Cantley 10/Nov/91

16) Signature of Installation Addressee (if SHARE Member)

ARE PROGRAM LIBRARY SUBMITTAL FORM

University of Miami
SHARE Program Library Agency
P. O. Box 248011
Coral Gables, Florida 33124-4220
Attn: Fred Robinson

LA CONTROL NUMBER: _____

This form should be completed and submitted with the program package to the SHARE Program Library Agency at the address shown above. Standards and instructions for submitting programs are in the SHARE Program Library Agency User's Guide and Catalog Programs, or may be obtained from the SPLA.

- 1) Program Number (if new program, will be filled in by SPLA) _____
- 2) Title of Program CADUNA
- 3) System Type(s) (Machine) VM/SP, HPO 2 and above (XA?) CADAM 20
- 4) Search Keys _____
- 5) Programming Systems/Languages VM-Rexx
- 6) Primary Subject Codes _____
- 7) Minimum System Requirements _____
- 8) New (N) or Revision (R) New
- 9) Date of Submittal 18 / Nov / 91
- 0) Documentation (number of pages of hardcopy submitted) 0
- 1) Author's Name and Address Ken Chamberlain
..... Prestolite Electric
..... Four Seneca
..... Toledo, OH 43691
- 2) Name and Address of Contact for Technical ..
Inquiries (if different from Author) ..
.....
.....
.....
- 3) Submitter's Installation Membership Code _____
- 4) Abstract (use reverse side of this form)

DISCLAIMER

Users should note that The University of Miami serves solely as the distribution agent for contributed programs and does not test or maintain them. They are distributed essentially in the original form submitted by the author. Neither the University of Miami nor SHARE Inc. makes any warranty, expressed or implied, as to the documentation, function, performance of the contributed programs.

-

To the best of my knowledge, my program entitled "VM/Rexx-CADAM IUE Interface" is free of any proprietary, secret, or confidential information belonging to any person or organization. I have not used the work, plans, procedures, systems, programs or names of any companies or individuals.

Additionally, this program is submitted with the full knowledge and consent of the author.

Randal E. Cantley 18/Nov/91

SHARE PROGRAM LIBRARY SUBMITTAL FORM

* abstract should contain sufficient information for a reader to determine the value of the program. Subjects listed below may serve as a guide for information to include.

- a. Purpose of Program
- b. Programming Language Used
- c. Version and Modification level or Release Number
- d. Field of Application
- e. Type of routine (main program, subroutine, etc.)
- f. Specific description of machine requirements.

- a) This interface is for CADAM 21+ and above running under VM/SP (or LPO) Release 4 and above in non-XA mode. This is an IUE application using IUCV to communicate with REXX programs
- b) Assembler language
- c) RXIUE is currently version 3.0.1b
- d) Presently supports: Extract of groups, subgroups, model ids, model text, model info field; allows text, info field to be updated, models can be moved, copied, deleted. A priv table is used.
- e) Self loading nucleus extension
- f) VM/SP, LPO 4 and above (NOT XA), CADAM 21 and above.

An "Acknowledgement of Assistance" statement must be attached to this Submittal Form.

Conveyance of Rights:

"I hereby convey to SPLA all rights to these submitted materials, including, but not limited to, the unqualified right to reprint, reproduce, and publicly distribute this program, except that I expressly retain the rights to utilize, reprint, reproduce, and distribute the materials for my own purposes."

- 5) Signature of Submitter and Date Randal D. Canady 18 Nov 91
- 6) Signature of Installation Addressee (if SHARE Member) _____

SHARE PROGRAM LIBRARY SUBMITTAL FORM

University of Miami
SHARE Program Library Agency
P. O. Box 248011
Coral Gables, Florida 33124-4220
Attn: Fred Robinson

SPLA CONTROL NUMBER: _____

This form should be completed and submitted with the program package to the SHARE Program Library Agency at the address shown above. Standards and instructions for submitting programs are in the SHARE Program Library Agency User's Guide and Catalog Programs, or may be obtained from the SPLA.

- 1) Program Number (if new program, will be filled in by SPLA) _____
- 2) Title of Program RX1UE (REXX-1UE INTERFACE)
- 3) System Type(s) (Machine) ^{4 and above} VM/SP, HPO (EXA), CAOMM 21 and above
- 4) Search Keys _____
- 5) Programming Systems/Languages Assembler
- 6) Primary Subject Codes _____
- 7) Minimum System Requirements _____
- 8) New (N) or Revision (R) NEW
- 9) Date of Submittal 18/Nov/91
- 10) Documentation (number of pages of hardcopy submitted) 10
- 1) Author's Name and Address Ken Chamberlain
..... PRESTOLITE Electric
..... Four Seagate
..... Toledo, OH 43691
- 2) Name and Address of Contact for Technical ..
Inquiries (if different from Author) ..
.....
.....
.....
- 3) Submitter's Installation Membership Code _____
- 4) Abstract (use reverse side of this form)

DISCLAIMER

Users should note that The University of Miami serves solely as the distribution agent for contributed programs and does not test or maintain them. They are distributed essentially in the original form submitted by the author. Neither the University of Miami nor SHARE Inc. makes any warranty, expressed or implied, as to the documentation, function, performance of the contributed programs.

To the best of my knowledge, my program entitled "VM/Rexx-CADAM IUE Interface" is free of any proprietary, secret, or confidential information belonging to any person or organization. I have not used the work, plans, procedures, systems, programs or names of any companies or individuals.

Additionally, this program is submitted with the full knowledge and consent of the author.

Randall D Cantley 18/Nov/91

SHARE PROGRAM LIBRARY SUBMITTAL FORM

University of Miami
SHARE Program Library Agency
P. O. Box 248011
Coral Gables, Florida 33124-4220
Attn: Fred Robinson

SPLA CONTROL NUMBER: _____

This form should be completed and submitted with the program package to the SHARE Program Library Agency at the address shown above. Standards and instructions for submitting programs are in the SHARE Program Library Agency User's Guide and Catalog of Programs, or may be obtained from the SPLA.

- (1) Program Number (if new program, will be filled in by SPLA) _____
- (2) Title of Program FDWC AND IVEUTIL
- (3) System Type(s) (Machine) _____
- (4) Search Keys _____
- (5) Programming Systems/Languages VM, CMS, XEDIT, FORTRAN, CADAM
- (6) Primary Subject Codes _____
- (7) Minimum System Requirements VM, FORTRAN, CADAM ACCESS AND INTERA
- (8) New (N) or Revision (R) N
- (9) Date of Submittal _____
- (10) Documentation (number of pages of hardcopy submitted) _____
- (11) Author's Name and Address BILL SHERRILL (606) 283-1309
CLARK MATERIAL HANDLING CO.
333 WEST VINE STREET
LEXINGTON KY 40507
- (12) Name and Address of Contact for Technical ..
Inquiries (if different from Author) _____

- (13) Submitter's Installation Membership Code _____
- (14) Abstract (use reverse side of this form)

DISCLAIMER

Users should note that The University of Miami serves solely as the distribution agent for contributed programs and does not test or maintain them. They are distributed essentially in the original form submitted by the author. Neither the University of Miami nor SHARE Inc. makes any warranty, expressed or implied, as to the documentation, function, performance of the contributed programs.

TAPE FILE 5

SHARE PROGRAM LIBRARY SUBMITTAL FORM

University of Miami
SHARE Program Library Agency
P. O. Box 248011
Coral Gables, Florida 33124-4220
Attn: Fred Robinson

SPLA CONTROL NUMBER: _____

This form should be completed and submitted with the program package to the SHARE Program Library Agency at the address shown above. Standards and instructions for submitting programs are in the SHARE Program Library Agency User's Guide and Catalog of Programs, or may be obtained from the SPLA.

- (1) Program Number (if new program, will be filled in by SPLA) _____
- (2) Title of Program BEAR (Bearing and Distance)
- (3) System Type(s) (Machine) _____
- (4) Search Keys _____
- (5) Programming Systems/Languages VS FORTRAN 2, IUE
- (6) Primary Subject Codes _____
- (7) Minimum System Requirements _____
- (8) New (N) or Revision (R) N
- (9) Date of Submittal _____
- (10) Documentation (number of pages of hardcopy submitted) 7
- (11) Author's Name and Address Kelly A. Mooney
South Carolina Electric & Gas Co.
1426 Main Street (mc 147)
Columbia, SC 29201
- (12) Name and Address of Contact for Technical ..
Inquiries (if different from Author) ..

- (13) Submitter's Installation Membership Code _____
- (14) Abstract (use reverse side of this form)

DISCLAIMER

Users should note that The University of Miami serves solely as the distribution agent for contributed programs and does not test or maintain them. They are distributed essentially in the original form submitted by the author. Neither the University of Miami nor SHARE Inc. makes any warranty, expressed or implied, as to the documentation, function, performance of the contributed programs.

SHARE PROGRAM LIBRARY SUBMITTAL FORM

The abstract should contain sufficient information for a reader to determine the value of the program. Subjects listed below may serve as a guide for information to include.

- a. Purpose of Program
- b. Programming Language Used
- c. Version and Modification level or Release Number
- d. Field of Application
- e. Type of routine (main program, subroutine, etc.)
- f. Specific description of machine requirements.

see attached sheet

An "Acknowledgement of Assistance" statement must be attached to this Submittal Form.

Conveyance of Rights:

"I hereby convey to SPLA all rights to these submitted materials, including, but not limited to, the unqualified right to reprint, reproduce, and publicly distribute this program, except that I expressly retain the rights to utilize, reprint, reproduce, and distribute the materials for my own purposes."

15) Signature of Submitter and Date

Kelly A. Moore 11/25/91

16) Signature of Installation Addressee (if SHARE Member)

BEAR PROGRAM

(ABSTRACT)

The BEAR Program is an interactive, IUE program. It is intended to supplement CADAM's LINE FK by allowing a scope operator to create a line based on a bearing and distance. The program also attaches a note containing the bearing and distance parallel to the line. The starting point of the first line is determined by the user, the starting point of subsequent lines is the ending point of the previous line.

This program is useful when creating property plats or working in any drawing where survey boundaries need to be shown.

Bearing and Distance information is entered at the keyboard in the format shown below:

DIR1,DD,MM,SS,DIR2,DISTANCE

Where:

DIR1 is either N or S

DD is a Positive Integer value less than or equal to 90.

MM is a Positive Integer value less than 60.

SS is a Positive Integer value less than 60.

DIR2 is either E or W

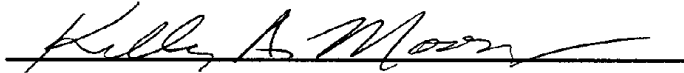
DISTANCE is a Positive Real value.

Example:

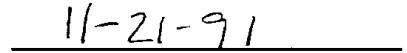
N,84,34,59,E,123.5

Acknowledgment of Assistance

To the best of my knowledge, my program entitled "**BEAR**" is free of any proprietary, secret, or confidential information belonging to any person or organization. Where I have used the work, plans, procedures, systems, programs or names of companies or individuals, I have obtained their permission to do so.

A handwritten signature in cursive script, reading "Kelly A. Mooney", is written over a horizontal line.

Kelly A. Mooney
(Program Author)

A handwritten date "11-21-91" is written over a horizontal line.

Date

BEAR Program
(Bearing and Distance)

Version 2.00

November 20, 1991

Program Developed
by
South Carolina Electric & Gas Company

Table of Contents

	<u>Page</u>
Disclaimer	3
Abstract	4
User Instructions	5

**DISCLAIMER OF WARRANTY
LIMITATION OF LIABILITY**

SOUTH CAROLINA ELECTRIC & GAS COMPANY (SCE&G) DISCLAIMS ALL WARRANTIES EXPRESSED OR IMPLIED, INCLUDING, BUT NOT LIMITED TO ANY IMPLIED WARRANTY OF MERCHANTABILITY OR FITNESS FOR A PARTICULAR PURPOSE AS TO THE DOCUMENTATION, FUNCTION, OR PERFORMANCE OF THIS PROGRAM. THIS SOFTWARE PROGRAM IS PROVIDED "AS IS". THE ENTIRE RISK AS TO THE RESULTS AND PERFORMANCE OF THE PROGRAM IS ASSUMED BY YOU. SCE&G DOES NOT WARRANT, GUARANTEE, OR MAKE ANY REPRESENTATIONS REGARDING THE USE OF, OR THE RESULTS OBTAINED WITH THE PROGRAM IN TERMS OF CORRECTNESS AND RELIABILITY OR LEGALITY. IN NO EVENT SHALL SCE&G BE LIABLE FOR ANY LOSS OF PROFIT OR ANY OTHER COMMERCIAL DAMAGE INCLUDING BUT NOT LIMITED TO SPECIAL, INCIDENTAL, CONSEQUENTIAL OR OTHER DAMAGES.

UNDER ANY CIRCUMSTANCE AND WITHOUT ALTERATION OF THE EFFECT OF THE ABOVE PARAGRAPH, SCE&G'S LIABILITY FOR DAMAGES, FOR ANY CAUSE WHATSOEVER AND REGARDLESS OF FORM OF ACTION, SHALL NOT EXCEED THE FEES ACTUALLY PAID FOR THE SOFTWARE.

BEAR PROGRAM

(ABSTRACT)

The BEAR Program is an interactive, IUE program. It is intended to supplement CADAM's LINE FK by allowing a scope operator to **create a line based on a bearing and distance. The program also attaches a note containing the bearing and distance parallel to the line.** The starting point of the first line is determined by the user, the starting point of subsequent lines is the ending point of the previous line.

This program is useful when creating property plats or working in any drawing where survey boundaries need to be shown.

Bearing and Distance information is entered at the keyboard in the format shown below:

DIR1,DD,MM,SS,DIR2,DISTANCE

Where:

DIR1 is either N or S

DD is a Positive Integer value less than or equal to 90.

MM is a Positive Integer value less than 60.

SS is a Positive Integer value less than 60.

DIR2 is either E or W

DISTANCE is a Positive Real value.

Example:

N,84,34,59,E,123.5

BEAR Program

(User Instructions)

The BEAR Program will create an unlimited number of lines based on a starting point and Bearing and Distance Data.

Running The Program

Call up the drawing, change to the desired view and set view scale to "1".

- o Press the ACCESS Key
- o Select /EXECUTE IUE PGM/
- o Select **BEAR**
- o Press the Y/N Key

Refer to the Messages and Menus as you run the program.

- o Define the point where the first line is to begin. This may be done by selecting an existing point, indicating a point, or keying in the coordinates.
- o Key in the bearing and distance of the line using the following format:

DIR1,DD,MM,SS,DIR2,DISTANCE

Where,

DIR1 is either N or S

DD is a Positive Integer value less than or equal to 90.

MM is a Positive Integer value less than 60.

SS is a Positive Integer value less than 60.

DIR2 is either E or W

DISTANCE is a Positive Real value.

Each of the above is separated by a comma.

Example,

N,84,34,59,E,123.5

If you key in bad data (incorrect format), the program will recognize this and return an error message and let you try again.

BEAR Program - User Instructions (Continued)

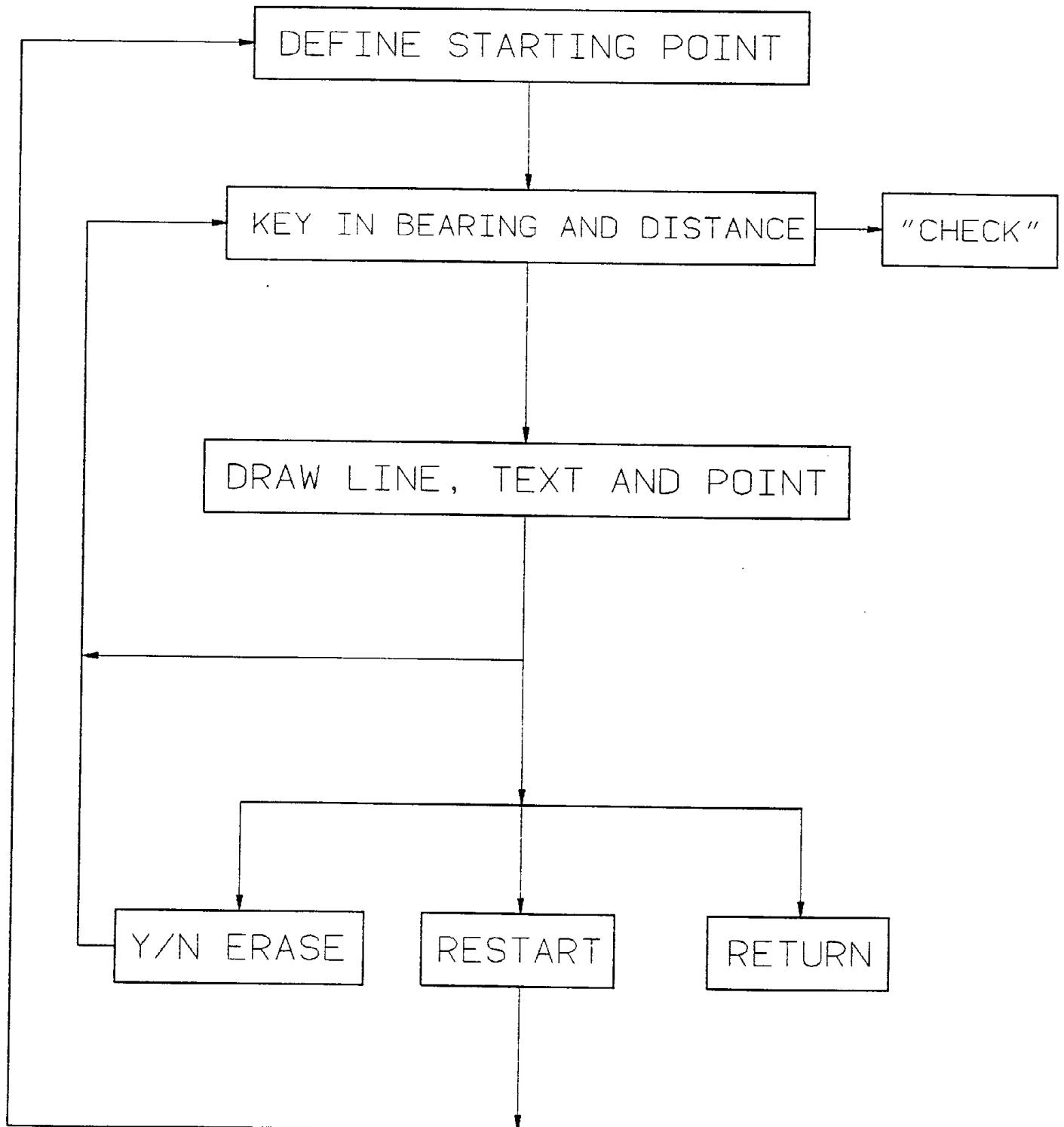
The YN reject function has been activated. If for some reason a line (with note attached) is created that you do not want, you may erase it with the YN key. If you decide you want it back, just hit YN again.

Continue entering Bearings and Distances until you are finished, then select "RETURN" followed by "KEEP" to save.

You can begin another set of Bearings and Distances by selecting "RESTART" at the bottom of the screen.

NOTE: If you are using this program to create a closed boundary, working in the clockwise direction will cause the text to appear on the inside of the line, working in the counter-clockwise direction will cause the text to appear on the outside of the line.

"BEAR"



TAPE FILE 5

TAPE KEY

CMS TAPE DUMP FORMAT

To Load Files to "A" disk, type:

TAPE LOAD * * A

File 1 - GRUPNOTE SOURCE (Main Program & Subroutines)

GRUPNOTE FORTRAN A

Recfm F Lrecl 80 Records 2203

File 2 - BEAR Source (Main Program & Subroutines)

BEAR FORTRAN A

Recfm F Lrecl 80 Records 770